

EGF Mouse mAb

CatalogNo: YM0211

| Key Features

Host Species

- Mouse

Reactivity

- Human

Applications

- WB,IF,ELISA

MW

- 134kD (Calculated)

| Recommended Dilution Ratios

WB 1:500-1:2000

IF 1:200-1:1000

ELISA 1:10000

Not yet tested in other applications.

| Storage

Storage*

-15°C to -25°C/1 year(Do not lower than -25°C)

Formulation

Liquid in PBS containing 50% glycerol, 0.5% BSA and 0.02% sodium azide.

| Basic Information

Clonality

Monoclonal

| Immunogen Information

Immunogen

Purified recombinant fragment of human EGF expressed in E. Coli.

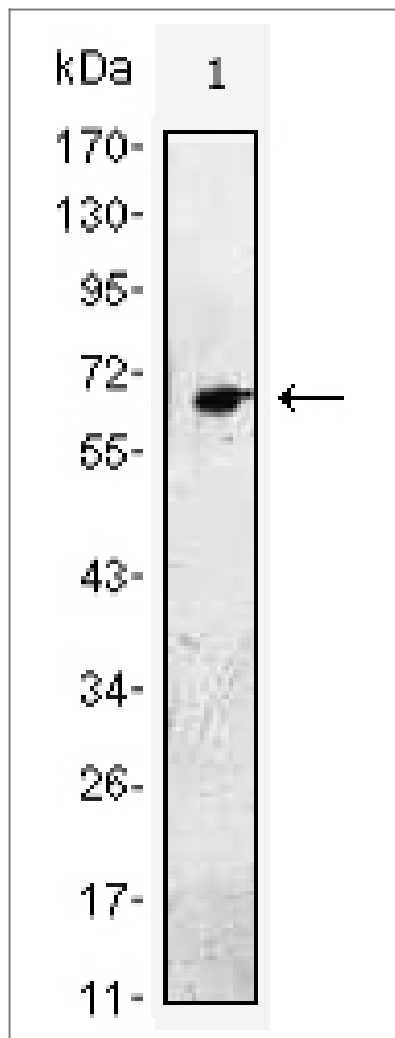
Specificity

EGF Monoclonal Antibody detects endogenous levels of EGF protein.

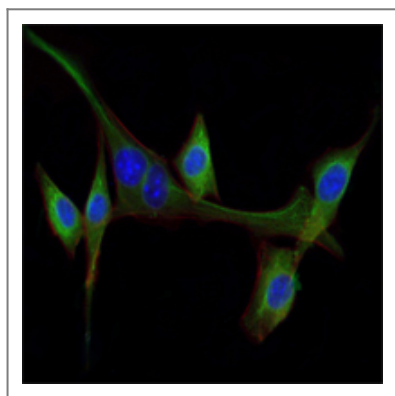
| Target Information

Gene name	EGF		
Protein Name	Pro-epidermal growth factor		
	Organism	Gene ID	UniProt ID
	Human	1950 ;	P01133 ;
	Mouse	13645 ;	P01132 ;
Cellular Localization	Membrane; Single-pass type I membrane protein.		
Tissue specificity	Expressed in kidney, salivary gland, cerebrum and prostate.		
Function	Disease:Defects in EGF are the cause of hypomagnesemia type 4 (HOMG4) [MIM:611718]; also known as renal hypomagnesemia normocalciuric. HOMG4 is a disorder characterized by massive renal hypomagnesemia and normal levels of serum calcium and calcium excretion. Clinical features include seizures, mild-to mederate psychomotor retardation, and brisk tendon reflexes.,Function:EGF stimulates the growth of various epidermal and epithelial tissues in vivo and in vitro and of some fibroblasts in cell culture. Magnesiotropic hormone that stimulates magnesium reabsorption in the renal distal convoluted tubule via engagement of EGFR and activation of the magnesium channel TRPM6.,online information:Epidermal growth factor entry,similarity:Contains 9 EGF-like domains.,similarity:Contains 9 LDL-receptor class B repeats.,tissue specificity:Expressed in kidney, salivary gland, cerebrum and prostate.,		

| Validation Data



Western Blot analysis using EGF Monoclonal Antibody against EGF-hIgGFc transfected HEK293 cell lysate.



Immunofluorescence analysis of NIH/3T3 cells using EGF Monoclonal Antibody (green). Blue: DRAQ5 fluorescent DNA dye. Red: Actin filaments have been labeled with Alexa Fluor-555 phalloidin.

Contact information

Orders: order.cn@immunoway.com
 Support: support.cn@immunoway.com
 Telephone: 400-8787-807(China)
 Website: <http://www.immunoway.com.cn>
 Address: 2200 Ringwood Ave San Jose, CA 95131 USA



Please scan the QR code to access additional product information:
EGF Mouse mAb

