

Synaptotagmin 1 Mouse mAb

CatalogNo: YM0605 Orthogonal Validated 

Key Features

Host Species

- Mouse

Reactivity

- Human

Applications

- WB,ELISA

Recommended Dilution Ratios

WB 1:500-1:2000**ELISA 1:10000****Not yet tested in other applications.**

Storage

Storage* -15°C to -25°C/1 year(Do not lower than -25°C)**Formulation** Liquid in PBS containing 50% glycerol, 0.5% BSA and 0.02% sodium azide.

Basic Information

Clonality Monoclonal

Immunogen Information

Immunogen Purified recombinant fragment of Synaptotagmin 1 expressed in E. Coli.**Specificity** Synaptotagmin 1 Monoclonal Antibody detects endogenous levels of Synaptotagmin 1 protein.

Target Information

Gene name SYT1

Protein Name

Synaptotagmin-1

Organism	Gene ID	UniProt ID
Human	6857 ;	P21579 ;
Mouse		P46096 ;

Cellular Localization

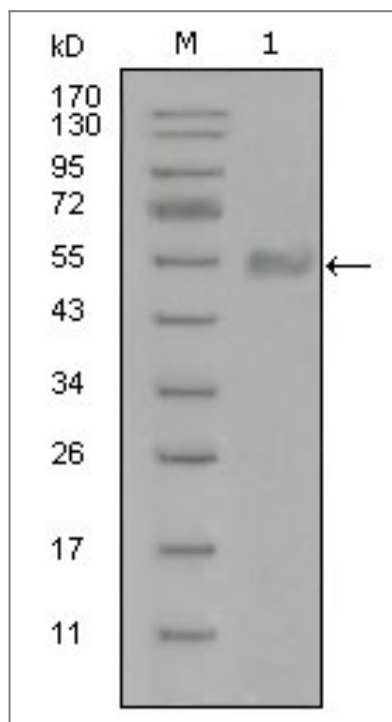
Cytoplasmic vesicle, secretory vesicle membrane ; Single-pass membrane protein .
Cytoplasmic vesicle, secretory vesicle, synaptic vesicle membrane ; Single-pass membrane protein .
Cytoplasmic vesicle, secretory vesicle, chromaffin granule membrane ; Single-pass membrane protein .
Cytoplasm .

Tissue specificity Expressed in melanocytes (PubMed:23999003).

Function

cofactor: Binds 3 calcium ions per subunit. The ions are bound to the C2 domains., Domain: The first C2 domain mediates Ca(2+)-dependent phospholipid binding., Domain: The second C2 domain mediates interaction with SV2A and STN2., Function: May have a regulatory role in the membrane interactions during trafficking of synaptic vesicles at the active zone of the synapse. It binds acidic phospholipids with a specificity that requires the presence of both an acidic head group and a diacyl backbone. A Ca(2+)-dependent interaction between synaptotagmin and putative receptors for activated protein kinase C has also been reported. It can bind to at least three additional proteins in a Ca(2+)-independent manner; these are neuexins, syntaxin and AP2., similarity: Belongs to the synaptotagmin family., similarity: Contains 2 C2 domains., subcellular location: Synaptic vesicles and chromaffin granules., subunit: Homotetramer (Probable). Interacts with SCAMP5, STN2, SV2A, SV2B, SV2C and RIMS1. Forms a complex with SV2B, syntaxin 1 and SNAP25.,

Validation Data



Western Blot analysis using Synaptotagmin 1 Monoclonal Antibody against truncated Trx-Synaptotagmin 1 recombinant protein (1).

| Contact information

Orders: order.cn@immunoway.com
Support: support.cn@immunoway.com
Telephone: 400-8787-807(China)
Website: <http://www.immunoway.com.cn>
Address: 2200 Ringwood Ave San Jose, CA 95131 USA



Please scan the QR code
to access additional
product information:
Synaptotagmin 1
Mouse mAb

For Research Use Only. Not for Use in Diagnostic Procedures.

[Antibody](#) | [ELISA Kits](#) | [Protein](#) | [Reagents](#)