

TGF β (1F12) Mouse mAb

CatalogNo: YM33051

| Key Features

Host Species

- Mouse

Reactivity

- Human, Mouse, Rat

Applications

- IHC, WB

MW

- 52kD (Observed)

| Recommended Dilution Ratios

IHC1:50-200

WB 1:1000-2000

| Storage

Storage* -15°C to -25°C/1 year(Do not lower than -25°C)

Formulation Liquid in PBS containing 50% glycerol, 0.5% BSA and 0.02% sodium azide.

| Basic Information

Clonality Monoclonal

Clone Number 1F12

| Immunogen Information

Immunogen Synthesized peptide derived from human TGF β 1 Polyclonal

Specificity This antibody detects endogenous levels of TGF β at Human, Mouse, Rat

| Target Information

Gene name TGFB1 TGFB

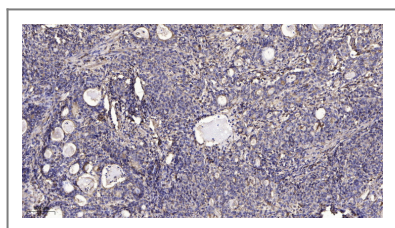
Protein Name Transforming growth factor beta-1, TGF- β 1, TGF b

Organism	Gene ID	UniProt ID
Human	7040 ;	P01137 ;
Mouse	21803 ;	P04202 ;
Rat	59086 ;	P17246 ;

Cellular Localization [Latency-associated peptide]: Secreted, extracellular space, extracellular matrix .;
[Transforming growth factor beta-1]: Secreted .

Tissue specificity Highly expressed in bone (PubMed:11746498, PubMed:17827158). Abundantly expressed in articular cartilage and chondrocytes and is increased in osteoarthritis (OA) (PubMed:11746498, PubMed:17827158). Colocalizes with ASPN in chondrocytes within OA lesions of articular cartilage (PubMed:17827158).

| Validation Data



Immunohistochemical analysis of paraffin-embedded human Gastric adenocarcinoma. 1, Antibody was diluted at 1:200(4° overnight). 2, Tris-EDTA,pH9.0 was used for antigen retrieval. 3,Secondary antibody was diluted at 1:200(room temperature, 45min).

| Contact information

Orders: order.cn@immunoway.com
Support: support.cn@immunoway.com
Telephone: 400-8787-807(China)
Website: <http://www.immunoway.com.cn>
Address: 2200 Ringwood Ave San Jose, CA 95131 USA



Please scan the QR code to access additional product information:
TGF β (1F12) Mouse mAb

For Research Use Only. Not for Use in Diagnostic Procedures.

[Antibody](#) | [ELISA Kits](#) | [Protein](#) | [Reagents](#)