

## SOD2 (PTR1396) Mouse mAb

CatalogNo: YM4265

### Key Features

#### Host Species

- Mouse

#### Reactivity

- Human, Mouse, Rat,

#### Applications

- WB, IF, ELISA

#### MW

- 25kD (Calculated)  
25kD (Observed)

### Recommended Dilution Ratios

**WB 1:500-2000**

**IF 1:100-500**

**ELISA 1:1000-5000**

### Storage

**Storage\*** -15°C to -25°C/1 year (Do not lower than -25°C)

### Basic Information

**Clonality** Monoclonal

**Clone Number** PTR1396

### Immunogen Information

**Immunogen** AA range: 1-222

**Specificity** This antibody detects endogenous levels of SOD2 protein.

### Target Information

**Gene name** SOD2

**Protein Name** Superoxide dismutase [Mn] mitochondrial

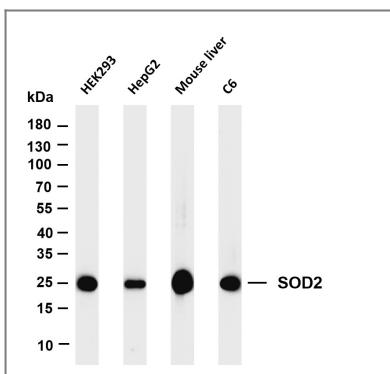
Organism	Gene ID	UniProt ID
Human	<a href="#">6648;</a>	<a href="#">P04179;</a>
Mouse	<a href="#">20656;</a>	<a href="#">P09671;</a>
Rat	<a href="#">24787;</a>	<a href="#">P07895;</a>

**Cellular Localization** Mitochondrion matrix

**Tissue specificity** Brain,Colon,Heart,Liver,Lung,Mammary carcinoma,Tongue,

**Function** Catalytic activity:2 superoxide + 2 H(+) = O(2) + H(2)O(2).,cofactor:Binds 1 manganese ion per subunit.,Disease:Genetic variation in SOD2 is associated with susceptibility to diabetic nephropathy [MIM:612634]; also called susceptibility to microvascular complications of diabetes type 6 (MVCD6). Diabetic nephropathy is a kidney disease and resultant kidney function impairment due to the long standing effects of diabetes on the microvasculature (glomerulus) of the kidney. Features include increased urine protein and declining kidney function.,Function:Destroys radicals which are normally produced within the cells and which are toxic to biological systems.,online information:Superoxide dismutase entry,online information:The Singapore human mutation and polymorphism database,PTM:Nitrated under oxidative stress. Nitration coupled with oxidation inhibits the catalytic activity.,similarity:Belongs to the iron/manganese superoxide dismutase family.,subunit:Homotetramer.,

## Validation Data



Various whole cell lysates were separated by 4-20% SDS-PAGE, and the membrane was blotted with anti-SOD2 (PTR1396) antibody. The HRP-conjugated Goat anti-Rabbit IgG(H + L) antibody was used to detect the antibody. Lane 1: HEK293 Lane 2: HepG2 Lane 3: Mouse liver Lane 4: C6  
Predicted band size: 25kDa Observed band size: 25kDa

## Contact information

Orders: order.cn@immunoway.com  
Support: support.cn@immunoway.com  
Telephone: 408-747-0189 (USA) 400-8787-807(China)  
Website: http://www.immunoway.com.cn  
Address: 2200 Ringwood Ave San Jose, CA 95131 USA



Please scan the QR code  
to access additional  
product information:  
**SOD2 (PTR1396)**  
**Mouse mAb**

---

For Research Use Only. Not for Use in Diagnostic Procedures.

[Antibody](#) | [ELISA Kits](#) | [Protein](#) | [Reagents](#)