

GI Syn/Glutamine Synthetase (PTR1400) Mouse mAb

CatalogNo: YM4292

Key Features

Host Species

- Mouse

Reactivity

- Human, Mouse, Rat

Applications

- WB, IF, ELISA, IHC

MW

- 42kD (Calculated)
- 42kD (Observed)

Recommended Dilution Ratios

IHC 1:200-1000

WB 1:500-2000

IF 1:100-500

ELISA 1:1000-5000

Storage

Storage* -15°C to -25°C/1 year (Do not lower than -25°C)

Formulation PBS, 50% glycerol, 0.05% Proclin 300, 0.05% BSA

Basic Information

Clonality Monoclonal

Clone Number PTR1400

Immunogen Information

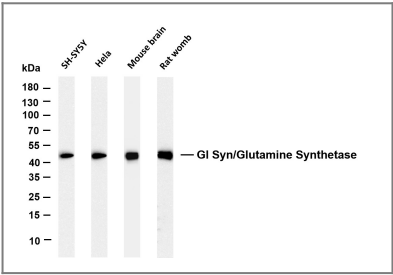
Immunogen AA range: 300-400

Specificity This antibody detects endogenous levels of GI Syn/Glutamine Synthetase protein.

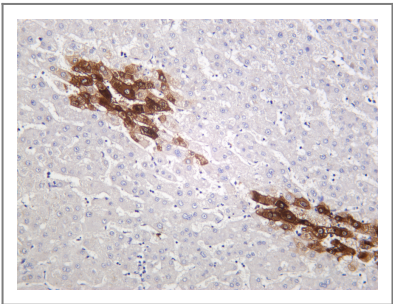
Target Information

Gene name	GLUL		
Protein Name	Glutamine synthetase		
	Organism	Gene ID	UniProt ID
	Human	2752 ;	P15104 ;
	Mouse	14645 ;	P15105 ;
	Rat	24957 ;	P09606 ;
Cellular Localization	Membrane, Cytoplasm		
Tissue specificity	Expressed in endothelial cells.		
Function	Catalytic activity:ATP + L-glutamate + NH(3) = ADP + phosphate + L-glutamine.,Disease:Defects in GLUL are the cause of congenital systemic glutamine deficiency (CSGD) [MIM:610015]. CSGD is a rare developmental disorder with severe brain malformation resulting in multi-organ failure and neonatal death. Glutamine is largely absent from affected patients serum, urine and cerebrospinal fluid.,online information:Glutamine synthetase entry,similarity:Belongs to the glutamine synthetase family.,subunit:Homooctamer.,		

Validation Data



Various whole cell lysates were separated by 4-20% SDS-PAGE, and the membrane was blotted with anti-Gl Syn/Glutamine Synthetase (PTR1400) antibody. The HRP-conjugated Goat anti-Rabbit IgG(H + L) antibody was used to detect the antibody. Lane 1: SH-SY5Y Lane 2: Hela Lane 3: Mouse brain Lane 4: Rat womb Predicted band size: 42kDa Observed band size: 42kDa



Human liver was stained with anti-Gl Syn/Glutamine Synthetase (PTR1400) mouse antibody

Contact information

Orders: order.cn@immunoway.com
Support: support.cn@immunoway.com
Telephone: 400-8787-807(China)
Website: <http://www.immunoway.com.cn>
Address: 2200 Ringwood Ave San Jose, CA 95131 USA



Please scan the QR code
to access additional
product information:
**GI Syn/Glutamine
Synthetase
(PTR1400) Mouse
mAb**

For Research Use Only. Not for Use in Diagnostic Procedures.

[Antibody](#) | [ELISA Kits](#) | [Protein](#) | [Reagents](#)