

Claudin 18.1 (PT0108) Mouse mAb

CatalogNo: YM6172

Key Features

Host Species

- Mouse

Reactivity

- Human, Mouse, Rat,

Applications

- IHC, IF, ELISA

MW

- 28kD (Calculated)

Isotype

- IgG1, Lambda

Recommended Dilution Ratios

IHC 1:200-400

IF 1:50-200

ELISA 1:500-5000

Storage

Storage* -15°C to -25°C/1 year (Do not lower than -25°C)

Formulation PBS, 50% glycerol, 0.05% Proclin 300, 0.05% BSA

Basic Information

Clonality Monoclonal

Clone Number PT0108

Immunogen Information

Immunogen Synthesized peptide derived from human Claudin 18 AA range: 1-100

Specificity This antibody detects endogenous levels of Claudin 18.1 protein.

Target Information

Gene name CLDN18 UNQ778/PRO1572

Protein Name Claudin 18

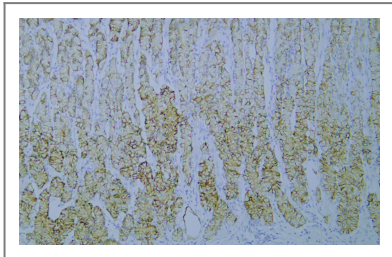
Organism	Gene ID	UniProt ID
Human	51208 ;	P56856 ;

Cellular Localization Membranous

Tissue specificity Isoform A1: Expression is restricted to the lung (PubMed:19047087). Isoform A2: Expression is restricted to the stomach mucosa where it is predominantly observed in the epithelial cells of the pit region and the base of the gastric glands including exocrine and endocrine cells (at protein level) (PubMed:19047087).

Function Function:Plays a major role in tight junction-specific obliteration of the intercellular space, through calcium-independent cell-adhesion activity.,similarity:Belongs to the claudin family.,tissue specificity:Concentrated at the cell-cell borders of epithelial cells.,

Validation Data



Human stomach tissue was stained with Anti-Claudin 18.1 (PT0108) Antibody

Contact information

Orders: order.cn@immunoway.com
Support: support.cn@immunoway.com
Telephone: 408-747-0189 (USA) 400-8787-807(China)
Website: <http://www.immunoway.com.cn>
Address: 2200 Ringwood Ave San Jose, CA 95131 USA



Please scan the QR code to access additional product information:
Claudin 18.1 (PT0108) Mouse mAb

For Research Use Only. Not for Use in Diagnostic Procedures.

[Antibody](#) | [ELISA Kits](#) | [Protein](#) | [Reagents](#)