

CDX-2 (ABT-CDX2) Mouse mAb

CatalogNo: YM6305

Key Features

Host Species

- Mouse

Reactivity

- Human,

Applications

- IHC,IF,ELISA

Isotype

- IgG1,Kappa

Recommended Dilution Ratios

IHC 1:200-400

IF 1:50-200

ELISA 1:500-5000

Storage

Storage* -15°C to -25°C/1 year(Do not lower than -25°C)

Formulation PBS, 50% glycerol, 0.05% Proclin 300, 0.05%BSA

Basic Information

Clonality Monoclonal

Clone Number ABT-CDX2

Immunogen Information

Immunogen Synthesized peptide derived from human CDX-2 AA range: 150-265

Specificity This antibody detects endogenous levels of CDX-2 protein.

Target Information

Gene name CDX2 CDX3

Protein Name Homeobox protein CDX-2 (CDX-3) (Caudal-type homeobox protein 2)

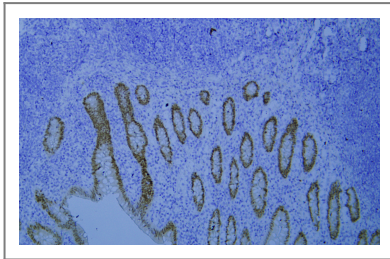
Organism	Gene ID	UniProt ID
Human	1045 ;	P47902 ; Q99626 ; O14627 ;

Cellular Localization Nuclear

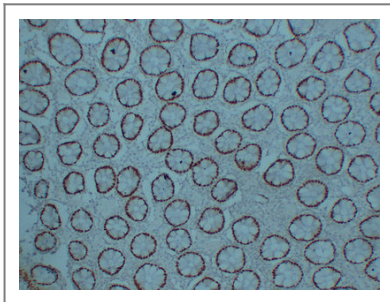
Tissue specificity Detected in small intestine, colon and pancreas.

Function Function:Involved in the transcriptional regulation of multiple genes expressed in the intestinal epithelium. Important in broad range of functions from early differentiation to maintenance of the intestinal epithelial lining of both the small and large intestine.,PTM:Phosphorylation of Ser-60 mediates the transactivation capacity.,similarity:Belongs to the Caudal homeobox family.,similarity:Contains 1 homeobox DNA-binding domain.,

Validation Data



Human appendix tissue was stained with Anti-CDX-2 (ABT-CDX2) Antibody



Immunohistochemical analysis of paraffin-embedded Colon. 1, Antibody was diluted at 1:200(4° overnight). 2, Tris-EDTA,pH8.0 was used for antigen retrieval. 3,Secondary antibody was diluted at 1:200(room temperature, 30min).

Contact information

Orders: order.cn@immunoway.com
Support: support.cn@immunoway.com
Telephone: 400-8787-807(China)
Website: <http://www.immunoway.com.cn>
Address: 2200 Ringwood Ave San Jose, CA 95131 USA



Please scan the QR code to access additional product information:
CDX-2 (ABT-CDX2)
Mouse mAb

