

## CDK4 (PT0399R) PT™ Rabbit mAb

CatalogNo: YM8244 **Recombinant** 

### Key Features

#### Host Species

- Rabbit

#### Reactivity

- Human, Mouse, Rat

#### Applications

- WB, IHC, IF, IP, ELISA

#### MW

- 34kD (Calculated)  
34kD (Observed)

#### Isotype

- IgG, Kappa

### Storage

**Storage\*** -15°C to -25°C/1 year (Do not lower than -25°C)

**Formulation** PBS, 50% glycerol, 0.05% Proclin 300, 0.05% BSA

### Recommended Dilution Ratios

**WB 1:1000-1:5000**

**IF 1:200-1:1000**

**ELISA 1:5000-1:20000**

**IP 1:50-1:200**

### Basic Information

**Clonality** Monoclonal

**Clone Number** PT0399R

### Immunogen Information

**Specificity** Endogenous

## Target Information

**Gene name** CDK4

**Protein Name** Cyclin-dependent kinase 4

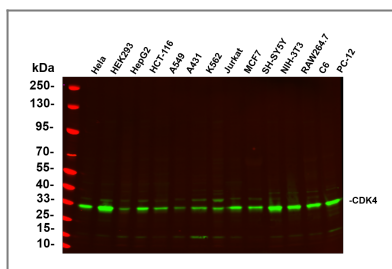
Organism	Gene ID	UniProt ID
Human	<a href="#">1019;</a>	<a href="#">P11802;</a>
Mouse	<a href="#">12567;</a>	<a href="#">P30285;</a>
Rat	<a href="#">94201;</a>	<a href="#">P35426;</a>

**Cellular Localization** Cytoplasm, Nucleus

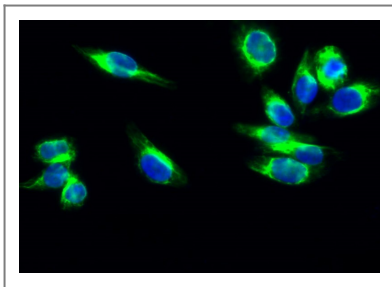
**Tissue specificity** Brain, Muscle,

**Function** Catalytic activity:ATP + a protein = ADP + a phosphoprotein.,Disease:CDK4 mutations are involved in tumor formation.,Disease:Defects in CDK4 are the cause of cutaneous malignant melanoma 3 (CMM3) [MIM:609048, 155600]. Malignant melanoma is a malignant neoplasm of melanocytes, arising de novo or from a preexisting benign nevus, which occurs most often in the skin but also may involve other sites.,enzyme regulation:Phosphorylation at Thr-172 is necessary for enzymatic activity.,Function:Probably involved in the control of the cell cycle.,similarity:Belongs to the protein kinase superfamily. CMGC Ser/Thr protein kinase family. CDC2/CDKX subfamily.,similarity:Contains 1 protein kinase domain.,subunit:Forms a stable complex with D-type G1 cyclins. Interacts with SEI1 and ZNF655/VIK.,

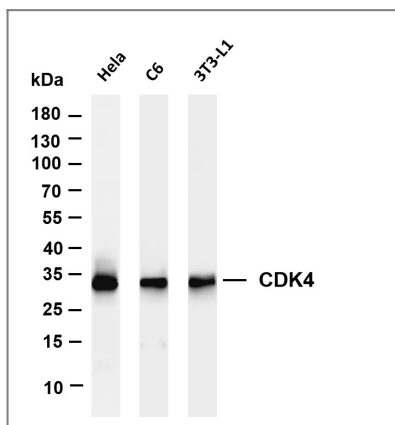
## Validation Data



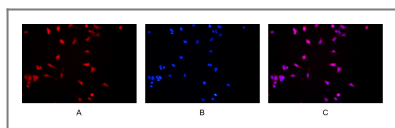
Various whole cell lysates were separated by 4-20% SDS-PAGE, and the primary antibody was used at 4°C, over night with a 1:5000 dilution . The Dylight 800-conjugated Goat anti-Rabbit antibody(Cat:RS23920) was used to detect the antibody. Lane1: HeLa - Human cervical cancer Lane2: HEK293 - Human normal embryonic kidney Lane3: HepG2 - Human hepatocellular carcinoma Lane4: HCT-116 - Human colon cancer Lane5: A549 - Human lung adenocarcinoma Lane6: A431 - Human skin squamous cell carcinoma Lane7: K562 - Human chronic myeloid leukemia Lane8: Jurkat - Human acute T cell leukemia cells Lane9: MCF7 - Human breast cancer Lane10: SH-SY5Y - Human neuroblastoma cells Lane11: NIH-3T3 - NIH mouse fibroblasts Lane12: RAW264.7 - Mouse mononuclear macrophage leukemia cells Lane13: C6 - Rat glioma cells Lane14: PC-12 - Pheochromocytoma in rats Predicted band size: 34kDa Observed band size: 34kDa



Immunofluorescence analysis of HeLa cell. 1, Cdk4 Antibody (green) was diluted at 1:200 (4° overnight). 2, Goat Anti Rabbit Alexa Fluor 488 Catalog: RS3211 was diluted at 1:1000 (room temperature, 50min). 3 DAPI (blue) 10min.



Various whole cell lysates were separated by 4-20% SDS-PAGE, and the membrane was blotted with anti-CDK4 antibody. The HRP-conjugated Goat anti-Rabbit IgG (H + L) antibody was used to detect the antibody. Lane 1: HeLa Lane 2: C6 Lane 3: 3T3-L1 Predicted band size: 34kDa Observed band size: 34kDa



Immunofluorescence analysis of HEK293. Picture A: CDK4 antibody (red). Picture B: DAPI (blue). Picture C: Merge of A+B

## Contact information

Orders: [order.cn@immunoway.com](mailto:order.cn@immunoway.com)  
Support: [support.cn@immunoway.com](mailto:support.cn@immunoway.com)  
Telephone: 400-8787-807 (China)  
Website: <http://www.immunoway.com.cn>  
Address: 2200 Ringwood Ave San Jose, CA 95131 USA



Please scan the QR code to access additional product information:  
**CDK4 (PT0399R)**  
**PT™ Rabbit mAb**

For Research Use Only. Not for Use in Diagnostic Procedures.

[Antibody](#) | [ELISA Kits](#) | [Protein](#) | [Reagents](#)