

## Perilipin-1 (PT0458R) PT™ Rabbit mAb

CatalogNo: YM8295 **Recombinant** 

### Key Features

#### Host Species

- Rabbit

#### Reactivity

- Human, Mouse, Rat

#### Applications

- WB, IHC, IF, IP, ELISA

#### MW

- 56kD (Calculated)
- 56kD (Observed)

#### Isotype

- IgG, Kappa

### Storage

**Storage\*** -15°C to -25°C/1 year (Do not lower than -25°C)

**Formulation** PBS, 50% glycerol, 0.05% Proclin 300, 0.05% BSA

### Recommended Dilution Ratios

IHC 1:400-1:1000

WB 1:2000-1:10000

IF 1:200-1:1000

ELISA 1:5000-1:20000

IP 1:50-1:200

### Basic Information

**Clonality** Monoclonal

**Clone Number** PT0458R

### Immunogen Information

**Specificity** Endogenous

## Target Information

**Gene name** PLIN1 PERI PLIN

**Protein Name** Perilipin-1 (Lipid droplet-associated protein)

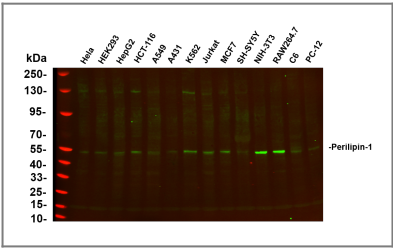
Organism	Gene ID	UniProt ID
Human	<a href="#">5346;</a>	<a href="#">O60240;</a>
Mouse	<a href="#">103968;</a>	<a href="#">Q8CGN5;</a>
Rat	<a href="#">25629;</a>	<a href="#">P43884;</a>

**Cellular Localization** Endoplasmic reticulum

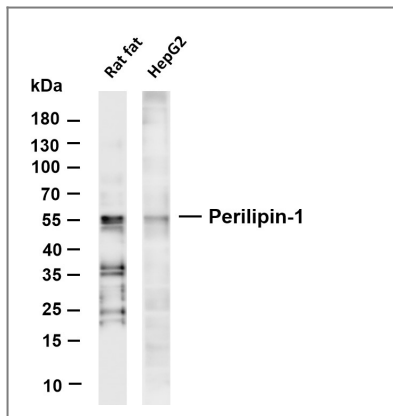
**Tissue specificity** Detected in adipocytes from white adipose tissue (at protein level) (PubMed:27832861). Detected in visceral adipose tissue and mammary gland (PubMed:9521880).

**Function** Modulator of adipocyte lipid metabolism. Coats lipid storage droplets to protect them from breakdown by hormone-sensitive lipase (HSL). Its absence may result in leanness. Plays a role in unilocular lipid droplet formation by activating CIDEC. Their interaction promotes lipid droplet enlargement and directional net neutral lipid transfer. May modulate lipolysis and triglyceride levels.

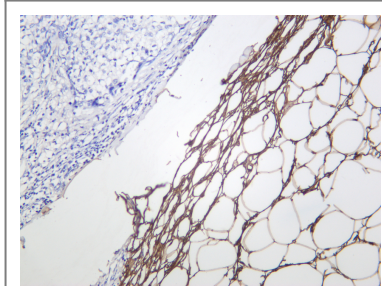
## Validation Data



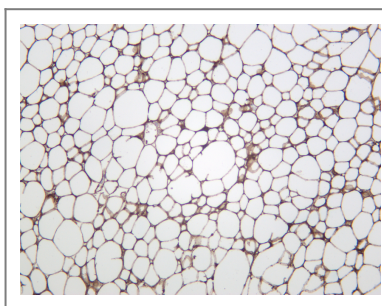
Various whole cell lysates were separated by 4-20% SDS-PAGE, and the primary antibody was used at 4°C, over night with a 1:5000 dilution . The Dylight 800-conjugated Goat anti-Rabbit antibody(Cat:RS23920) was used to detect the antibody. Lane1: Hela - Human cervical cancer Lane2: HEK293 - Human normal embryonic kidney Lane3: HepG2 - Human hepatocellular carcinoma Lane4: HCT-116 - Human colon cancer Lane5: A549 - Human lung adenocarcinoma Lane6: A431 - Human skin squamous cell carcinoma Lane7: K562 - Human chronic myeloid leukemia Lane8: Jurkat - Human acute T cell leukemia cells Lane9: MCF7 - Human breast cancer Lane10: SH-SY5Y - Human neuroblastoma cells Lane11: NIH-3T3 - NIH mouse fibroblasts Lane12: RAW264.7 - Mouse mononuclear macrophage leukemia cells Lane13: C6 - Rat glioma cells Lane14: PC-12 - Pheochromocytoma in rats Predicted band size: 56kDa Observed band size: 56kDa



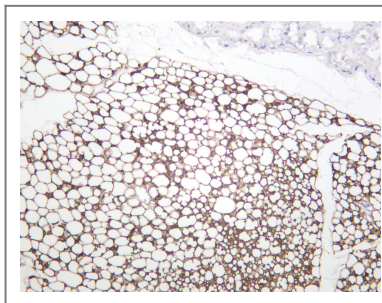
Various whole cell lysates were separated by 4-20% SDS-PAGE, and the membrane was blotted with anti-Perilipin-1 antibody. The HRP-conjugated Goat anti-Rabbit IgG(H + L) antibody was used to detect the antibody. Lane 1: Rat fat Lane 2: HepG2 Predicted band size: 56kDa Observed band size: 56kDa



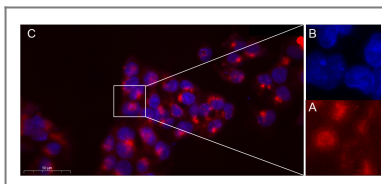
Human adipose was stained with anti-Perilipin-1 rabbit antibody



Mouse adipose was stained with anti-Perilipin-1 rabbit antibody



Rat adipose was stained with anti-Perilipin-1 rabbit antibody



Immunofluorescence analysis of HepG2. Picture A: Perilipin 1 PT0458R PT™ Rabbit mAb (red). Picture B: DAPI (blue). Picture C: Merge of A+B

## Contact information

Orders: order.cn@immunoway.com  
Support: support.cn@immunoway.com  
Telephone: 400-8787-807(China)  
Website: <http://www.immunoway.com.cn>  
Address: 2200 Ringwood Ave San Jose, CA 95131 USA



Please scan the QR code  
to access additional  
product information:  
**Perilipin-1**  
**(PT0458R) PT™**  
**Rabbit mAb**

---

For Research Use Only. Not for Use in Diagnostic Procedures.

[Antibody](#) | [ELISA Kits](#) | [Protein](#) | [Reagents](#)