

HRAS (PT0590R) PT® Rabbit mAb

CatalogNo: YM8401 **Recombinant** 

Key Features

Host Species

- Rabbit

Reactivity

- Human, Mouse, Rat,

Applications

- WB, IHC, IF, IP, ELISA

MW

- 21kD (Calculated)
21kD (Observed)

Isotype

- IgG, Kappa

Recommended Dilution Ratios

IHC 1:200-1:1000**WB 1:2000-1:10000****IF 1:200-1:1000****ELISA 1:5000-1:20000****IP 1:50-1:200**

Storage

Storage* -15°C to -25°C/1 year (Do not lower than -25°C)**Formulation** PBS, 50% glycerol, 0.05% Proclin 300, 0.05% BSA

Basic Information

Clonality Monoclonal**Clone Number** PT0590R

Immunogen Information

Specificity Endogenous

Target Information

Gene name HRAS,HRAS1

Protein Name GTPase,H-Ras-1,Ha-Ras,Transforming protein p21, ,c-H-ras, p21ras, Cleaved into: GTPase HRas N-terminally processed,Cleaved into: GTPase Hras,GTPase Hras,HRAS 1,

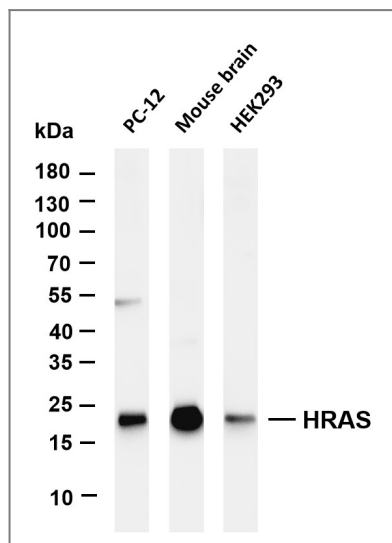
Organism	Gene ID	UniProt ID
Human	3265;	P01112;

Cellular Localization Cytoplasm, Membrane

Tissue specificity Widely expressed. {ECO:0000269|PubMed:14500341}.

Function Involved in the activation of Ras protein signal transduction ,PubMed:22821884,. Ras proteins bind GDP/GTP and possess intrinsic GTPase activity

Validation Data



Various whole cell lysates were separated by 4-20% SDS-PAGE, and the membrane was blotted with anti-HRAS antibody. The HRP-conjugated Goat anti-Rabbit IgG(H + L) antibody was used to detect the antibody. Lane 1: PC-12 Lane 2: Mouse brain Lane 3: HEK293 Predicted band size: 21kDa Observed band size: 21kDa

Contact information

Orders: order.cn@immunoway.com
Support: support.cn@immunoway.com
Telephone: 400-8787-807(China)
Website: <http://www.immunoway.com.cn>
Address: 2200 Ringwood Ave San Jose, CA 95131 USA



Please scan the QR code to access additional product information:
HRAS (PT0590R)
PT® Rabbit mAb

