

## Yes1 (PT0670R) PT® Rabbit mAb

CatalogNo: YM8560 **Recombinant** 

### Key Features

#### Host Species

- Rabbit

#### Reactivity

- Human

#### Applications

- WB,IHC,IF,IP,ELISA

#### MW

- 61kD (Calculated)
- 61kD (Observed)

#### Isotype

- IgG,Kappa

### Recommended Dilution Ratios

IHC 1:200-1:1000

WB 1:2000-1:10000

IF 1:200-1:1000

ELISA 1:5000-1:20000

IP 1:50-1:200

### Storage

**Storage\*** -15°C to -25°C/1 year(Do not lower than -25°C)

**Formulation** PBS, 50% glycerol, 0.05% Proclin 300, 0.05%BSA

### Basic Information

**Clonality** Monoclonal

**Clone Number** PT0670R

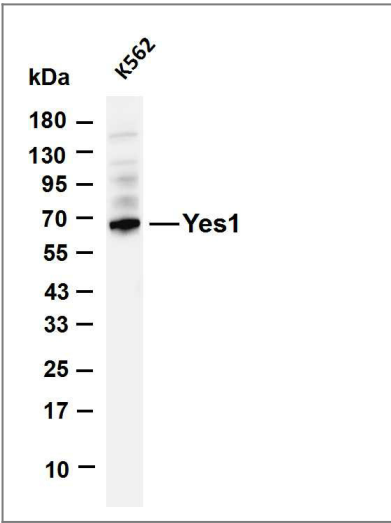
### Immunogen Information

**Specificity** Endogenous

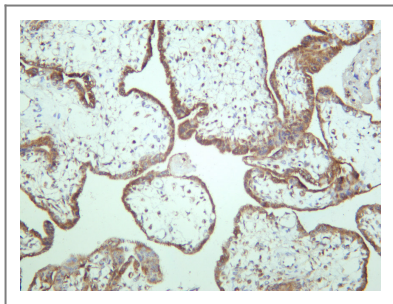
## Target Information

Gene name	YES1		
Protein Name	Proto-oncogene tyrosine-protein kinase Yes		
	Organism	Gene ID	UniProt ID
	Human	<a href="#">7525</a> ;	<a href="#">P07947</a> ;
	Mouse		<a href="#">Q04736</a> ;
Cellular Localization	Cell membrane. Cytoplasm, cytoskeleton, microtubule organizing center, centrosome. Cytoplasm, cytosol. Newly synthesized protein initially accumulates in the Golgi region and traffics to the plasma membrane through the exocytic pathway.		
Tissue specificity	Expressed in the epithelial cells of renal proximal tubules and stomach as well as hematopoietic cells in the bone marrow and spleen in the fetal tissues. In adult, expressed in epithelial cells of the renal proximal tubules and present in keratinocytes in the basal epidermal layer of epidermis.		
Function	Catalytic activity:ATP + a [protein]-L-tyrosine = ADP + a [protein]-L-tyrosine phosphate.,Function:Promotes infectivity of Neisseria gonorrhoeae in epithelial cells by phosphorylating MCP/CD46.,PTM:Autophosphorylated.,similarity:Belongs to the protein kinase superfamily. Tyr protein kinase family. SRC subfamily.,similarity:Contains 1 protein kinase domain.,similarity:Contains 1 SH2 domain.,similarity:Contains 1 SH3 domain.,subcellular location:In epithelial cells infected with Neisseria gonorrhoeae, forms aggregates beneath bacterial microcolonies.,		

## Validation Data



Various whole cell lysates were separated by 4-20% SDS-PAGE, and the membrane was blotted with anti-Yes1 antibody. The HRP-conjugated Goat anti-Rabbit IgG(H + L) antibody was used to detect the antibody. Lane 1: K562 Predicted band size: 61kDa Observed band size: 61kDa



Human placenta was stained with anti-Yes1 rabbit antibody

## | Contact information

Orders: order.cn@immunoway.com  
Support: support.cn@immunoway.com  
Telephone: 400-8787-807(China)  
Website: <http://www.immunoway.com.cn>  
Address: 2200 Ringwood Ave San Jose, CA 95131 USA



Please scan the QR code  
to access additional  
product information:  
**Yes1 (PT0670R)**  
**PT® Rabbit mAb**

For Research Use Only. Not for Use in Diagnostic Procedures.

[Antibody](#) | [ELISA Kits](#) | [Protein](#) | [Reagents](#)