

## Actinin- $\alpha$ 2 (PT0841R) PT<sup>®</sup> Rabbit mAb

CatalogNo: YM8610 **Recombinant** 

### Key Features

#### Host Species

- Rabbit

#### Reactivity

- Human, Mouse, Rat

#### Applications

- WB, IHC, IF, IP, ELISA

#### MW

- 104kD (Calculated)  
104kD (Observed)

#### Isotype

- IgG, Kappa

### Recommended Dilution Ratios

IHC 1:200-1:1000

WB 1:500-1:2000

IF 1:200-1:1000

ELISA 1:5000-1:20000

IP 1:50-1:200

### Storage

**Storage\*** -15°C to -25°C/1 year (Do not lower than -25°C)

**Formulation** PBS, 50% glycerol, 0.05% Proclin 300, 0.05% BSA

### Basic Information

**Clonality** Monoclonal

**Clone Number** PT0841R

### Immunogen Information

**Specificity** Endogenous

## Target Information

**Gene name** ACTN2/ACTN3

**Protein Name** Alpha-actinin-2

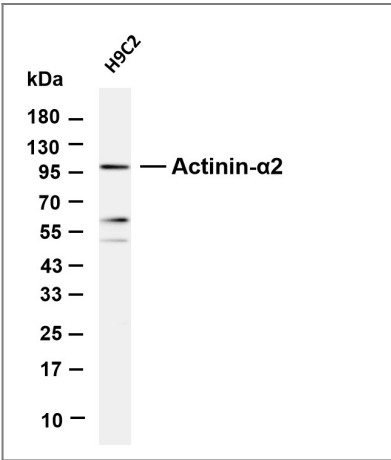
Organism	Gene ID	UniProt ID
Human	<a href="#">88;</a>	<a href="#">P35609;</a>
Mouse		<a href="#">Q9JI91;</a>

**Cellular Localization** Cytoplasm, myofibril, sarcomere, Z line . Colocalizes with MYOZ1 and FLNC at the Z-lines of skeletal muscle.

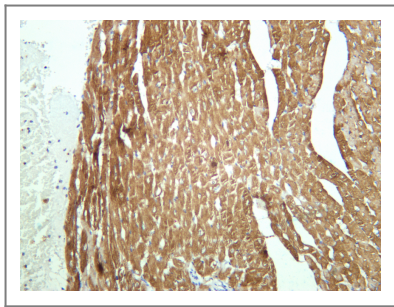
**Tissue specificity** Expressed in both skeletal and cardiac muscle.

**Function** Disease:Defects in ACTN2 are the cause of cardiomyopathy dilated type 1AA (CMD1AA) [MIM:612158]. Dilated cardiomyopathy is a disorder characterized by ventricular dilation and impaired systolic function, resulting in congestive heart failure and arrhythmia. Patients are at risk of premature death.,Function:F-actin cross-linking protein which is thought to anchor actin to a variety of intracellular structures. This is a bundling protein.,similarity:Belongs to the alpha-actinin family.,similarity:Contains 1 actin-binding domain.,similarity:Contains 2 CH (calponin-homology) domains.,similarity:Contains 2 EF-hand domains.,similarity:Contains 4 spectrin repeats.,subcellular location:Colocalizes with MYOZ1 and FLNC at the Z-lines of skeletal muscle.,subunit:Homodimer; antiparallel. Also forms heterodimers with ACTN3. Interacts with ADAM12, MYOZ1, MYOZ2 and MYOZ3. Interacts via its C-terminal region with the LDB3 PDZ domain. Interacts with XIRP2.,tissue specificity:Expressed in both skeletal and cardiac muscle.,

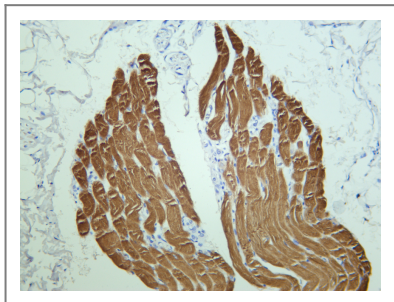
## Validation Data



Various whole cell lysates were separated by 4-20% SDS-PAGE, and the membrane was blotted with anti-Actinin-α2 antibody. The HRP-conjugated Goat anti-Rabbit IgG (H + L) antibody was used to detect the antibody. Lane 1: H9C2 Predicted band size: 104kDa Observed band size: 104kDa



Mouse cardiac muscle was stained with anti-Actinin- $\alpha$ 2 rabbit antibody



Human skeletal muscle was stained with anti-Actinin- $\alpha$ 2 rabbit antibody

## Contact information

Orders: [order.cn@immunoway.com](mailto:order.cn@immunoway.com)  
Support: [support.cn@immunoway.com](mailto:support.cn@immunoway.com)  
Telephone: 400-8787-807(China)  
Website: <http://www.immunoway.com.cn>  
Address: 2200 Ringwood Ave San Jose, CA 95131 USA



Please scan the QR code  
to access additional  
product information:  
**Actinin- $\alpha$ 2**  
**(PT0841R) PT<sup>®</sup>**  
**Rabbit mAb**

For Research Use Only. Not for Use in Diagnostic Procedures.

[Antibody](#) | [ELISA Kits](#) | [Protein](#) | [Reagents](#)