

p70 S6 Kinase (Phospho Thr389) (PT0721R) PT™ Rabbit mAb

CatalogNo: YM8766 **Recombinant** 

Key Features

Host Species

- Rabbit

Reactivity

- Human, Mouse, Rat, Bovine

Applications

- WB, IF, ELISA

MW

- 59kD (Calculated)
70kD (Observed)

Isotype

- IgG, Kappa

Storage

Storage* -15°C to -25°C/1 year (Do not lower than -25°C)

Formulation PBS, 50% glycerol, 0.05% Proclin 300, 0.05%BSA

Recommended Dilution Ratios

WB 1:2000-1:10000

IF 1:200-1:1000

ELISA 1:5000-1:20000

Basic Information

Clonality Monoclonal

Clone Number PT0721R

Immunogen Information

Immunogen The specific immunogen used to produce this antibody is proprietary information.

Specificity

p70 S6 Kinase (Phospho Thr389) Monoclonal Antibody detects endogenous levels of p70 S6 Kinase around the phosphorylation site of Thr389 protein. The name of modified sites may be influenced by many factors, such as species (the modified site was not originally found in human samples) and the change of protein sequence (the previous protein sequence is incomplete, and the protein sequence may be prolonged with the development of protein sequencing technology). When naming, we will use the "numbers" in historical reference to keep the sites consistent with the reports. The antibody binds to the following modification sequence (lowercase letters are modification sites):GFTYV

| Target Information

Gene name RPS6KB1 STK14A P70S6K

Protein Name Ribosomal protein S6 kinase beta-1,p70 S6 Kinase (Thr389)

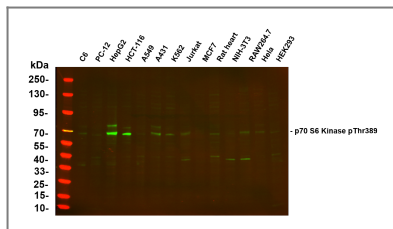
Organism	Gene ID	UniProt ID
Human	6198 ;	P23443 ;
Mouse	72508 ;	Q8BSK8 ;
Rat	83840 ;	P67999 ;

Cellular Localization Cell junction , synapse , synaptosome . Mitochondrion outer membrane. Mitochondrion. Colocalizes with URI1 at mitochondrion.; [Isoform Alpha I]: Nucleus. Cytoplasm.; [Isoform Alpha II]: Cytoplasm.

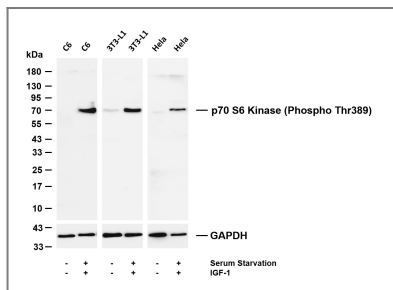
Tissue specificity Widely expressed.

Function Catalytic activity:ATP + a protein = ADP + a phosphoprotein. ,enzyme regulation:Activation by serine/threonine phosphorylation and protein kinase C , inactivated by type 2A phosphatase. ,Function:Phosphorylates specifically ribosomal protein S6 in response to insulin or several classes of mitogens. ,similarity:Belongs to the protein kinase superfamily. ,similarity:Belongs to the protein kinase superfamily. AGC Ser/Thr protein kinase family. S6 kinase subfamily. ,similarity:Contains 1 AGC-kinase C-terminal domain. ,similarity:Contains 1 protein kinase domain. ,subunit:Interacts with PPP1R9A/neurabin-1. ,tissue specificity:Widely expressed. ,

| Validation Data



Various whole cell lysates were separated by 4-20% SDS-PAGE, and the primary antibody was used at 4°C over night with a 1:5000 dilution . The Dylight 800-conjugated Goat anti-Rabbit antibody (Cat:RS23920) was used to detect the antibody. Lane1:C6- Rat glioma cells Lane2: PC-12 - Pheochromocytoma in rats Lane3: HepG2 - Human hepatocellular carcinoma Lane4: HCT-116 - Human colon cancer Lane5: A549 - Human lung adenocarcinoma Lane6: A431 - Human skin squamous cell carcinoma Lane7: K562 - Human chronic myeloid leukemia Lane8: Jurkat - Human acute T cell leukemia cells Lane9: MCF7 - Human breast cancer Lane10: Rat heart - Human neuroblastoma cells Lane11: NIH-3T3 - NIH mouse fibroblasts Lane12: RAW264.7 - Mouse mononuclear macrophage leukemia cells Lane13: Hela - Human cervical cancer Lane14: HEK293 - Human normal embryonic kidney



Various whole cell lysates were separated by 4-20% SDS-PAGE, and the membrane was blotted with anti-p70 S6 Kinase (Phospho Thr389) (PT0721R) antibody. The HRP-conjugated Goat anti-Rabbit IgG (H + L) antibody was used to detect the antibody. Lane 1: C6 Lane 2: C6 was starved with serum for 24 hours and treated with IGF-1 (100ng/mL) for 20 minutes Lane 3: 3T3-L1 Lane 4: 3T3-L1 was starved overnight with serum and treated with IGF-1 (100ng/mL) for 20 minutes Lane 5: HeLa Lane 6: HeLa was starved overnight with serum and treated with IGF-1 (100ng/mL) for 20 minutes Predicted band size: 59kDa Observed band size: 70kDa

Contact information

Orders: order.cn@immunoway.com
 Support: support.cn@immunoway.com
 Telephone: 400-8787-807(China)
 Website: <http://www.immunoway.com.cn>
 Address: 2200 Ringwood Ave San Jose, CA 95131 USA



Please scan the QR code to access additional product information:
p70 S6 Kinase (Phospho Thr389) (PT0721R) PT™ Rabbit mAb

For Research Use Only. Not for Use in Diagnostic Procedures.

[Antibody](#) | [ELISA Kits](#) | [Protein](#) | [Reagents](#)