

CT47A Rabbit pAb

CatalogNo: YN0124

| Key Features

Host Species

- Rabbit

Reactivity

- Human

Applications

- WB,ELISA

MW

- 31kD (Observed)

Isotype

- IgG

| Recommended Dilution Ratios

WB 1:500-2000

ELISA 1:5000-20000

| Storage

Storage*

-15°C to -25°C/1 year(Do not lower than -25°C)

Formulation

Liquid in PBS containing 50% glycerol, and 0.02% sodium azide.

| Basic Information

Clonality

Polyclonal

| Immunogen Information

Immunogen

Synthesized peptide derived from human protein . at AA range: 210-290

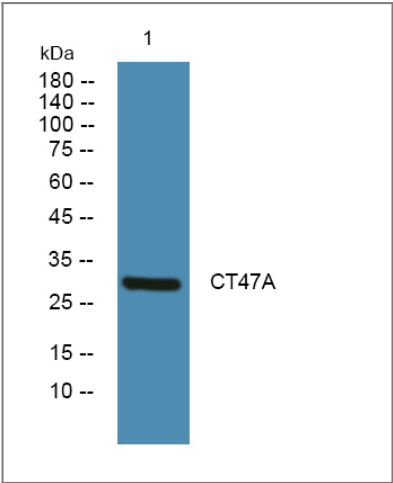
Specificity

CT47A Polyclonal Antibody detects endogenous levels of protein.

| Target Information

Gene name	CT47A1 CT47.1; CT47A2 CT47.2; CT47A3 CT47.3; CT47A4 CT47.4; CT47A5 CT47.5; CT47A6 CT47.6; CT47A7 CT47.7; CT47A8 CT47.8; CT47A9 CT47.9; CT47A10 CT47.10; CT47A11 CT47.11; CT47A12 CT47.12		
Protein Name	Cancer/testis antigen 47A (Cancer/testis antigen 47) (CT47)		
	Organism	Gene ID	UniProt ID
	Human	100507170 ;	Q5JQC4 ;
Tissue specificity	Strongly expressed in testis, low expression in placenta, and very low expression in brain.		
Function	tissue specificity:Strongly expressed in testis, low expression in placenta, and very low expression in brain.,		

| Validation Data



Western blot analysis of lysates from A431 cells, primary antibody was diluted at 1:1000, 4°over night

| Contact information

Orders: order.cn@immunoway.com
Support: support.cn@immunoway.com
Telephone: 400-8787-807(China)
Website: http://www.immunoway.com.cn
Address: 2200 Ringwood Ave San Jose, CA 95131 USA



Please scan the QR code to access additional product information:
CT47A Rabbit pAb