

IFN10 Rabbit pAb

CatalogNo: YN0215

Key Features

Host Species

- Rabbit

Reactivity

- Human

Applications

- WB,ELISA

MW

- 20kD (Observed)

Isotype

- IgG

Recommended Dilution Ratios

WB 1:500-2000**ELISA 1:5000-20000**

Storage

Storage*

-15°C to -25°C/1 year(Do not lower than -25°C)

Formulation

Liquid in PBS containing 50% glycerol, and 0.02% sodium azide.

Basic Information

Clonality

Polyclonal

Immunogen Information

Immunogen

Synthesized peptide derived from human protein . at AA range: 30-110

Specificity

IFN10 Polyclonal Antibody detects endogenous levels of protein.

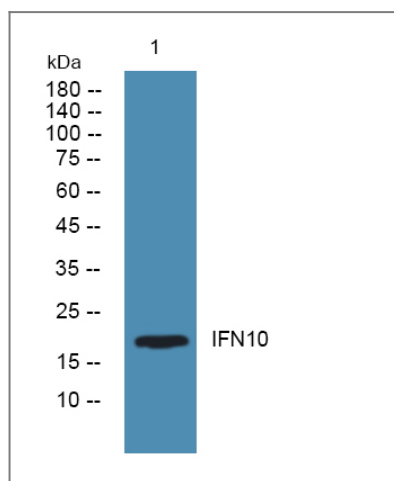
Target Information

Gene name

IFNA10

Protein Name	Interferon alpha-10 (IFN-alpha-10) (Interferon alpha-6L) (Interferon alpha-C) (LeIF C)		
	Organism	Gene ID	UniProt ID
	Human	3446;	P01566;
Cellular Localization	Secreted.		
Tissue specificity	PCR rescued clones,		
Function	Function:Produced by macrophages, IFN-alpha have antiviral activities. Interferon stimulates the production of two enzymes: a protein kinase and an oligoadenylate synthetase.,similarity:Belongs to the alpha/beta interferon family.,		

Validation Data



Western blot analysis of lysates from HCT116 cells, primary antibody was diluted at 1:1000, 4° over night

Contact information

Orders: order.cn@immunoway.com
 Support: support.cn@immunoway.com
 Telephone: 400-8787-807(China)
 Website: <http://www.immunoway.com.cn>
 Address: 2200 Ringwood Ave San Jose, CA 95131 USA



Please scan the QR code to access additional product information:
IFN10 Rabbit pAb