

## CENPH Rabbit pAb

CatalogNo: YN0306

### Key Features

#### Host Species

- Rabbit

#### Reactivity

- Human, Mouse

#### Applications

- WB, ELISA

#### MW

- 27kD (Observed)

#### Isotype

- IgG

### Recommended Dilution Ratios

**WB 1:500-2000**

**ELISA 1:5000-20000**

### Storage

#### Storage\*

-15°C to -25°C/1 year (Do not lower than -25°C)

#### Formulation

Liquid in PBS containing 50% glycerol, and 0.02% sodium azide.

### Basic Information

#### Clonality

Polyclonal

### Immunogen Information

#### Immunogen

Synthesized peptide derived from human protein . at AA range: 1-80

#### Specificity

CENPH Polyclonal Antibody detects endogenous levels of protein.

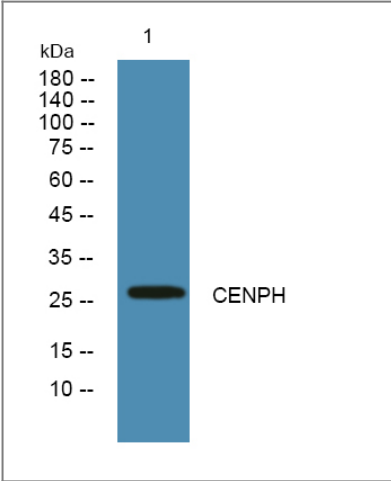
### Target Information

#### Gene name

CENPH ICEN35

<b>Protein Name</b>	Centromere protein H (CENP-H) (Interphase centromere complex protein 35)		
	<b>Organism</b>	<b>Gene ID</b>	<b>UniProt ID</b>
	Human	<a href="#">64946;</a>	<a href="#">Q9H3R5;</a>
	Mouse		<a href="#">Q9QYM8;</a>
<b>Cellular Localization</b>	Nucleus. Chromosome, centromere, kinetochore. Associates with active centromere-kinetochore complexes throughout the cell cycle. Colocalizes with inner kinetochore plate proteins CENPA and CENPC during both interphase and metaphase.		
<b>Tissue specificity</b>	Cervix carcinoma,Placenta,Testis,		
<b>Function</b>	Function:Component of the CENPA-NAC (nucleosome-associated) complex, a complex that plays a central role in assembly of kinetochore proteins, mitotic progression and chromosome segregation. The CENPA-NAC complex recruits the CENPA-CAD (nucleosome distal) complex and may be involved in incorporation of newly synthesized CENPA into centromeres.,similarity:Belongs to the centromere protein H family.,subcellular location:Associates with active centromere-kinetochore complexes throughout the cell cycle. Colocalizes with inner kinetochore plate proteins CENPA and CENPC1 during both interphase and metaphase.,subunit:Self-associates. Component of the CENPA-NAC complex, at least composed of CENPA, CENPC, CENPH, CENPM, CENPN, CENPT and MLF1IP/CENPU. The CENPA-NAC complex interacts with the CENPA-CAD complex, composed of CENPI, CENPK, CENPL, CENPO, CENPP, CENPQ, CENPR and CENPS. Interacts with KIF2C and NDC80.,		

| Validation Data



Western blot analysis of lysates from PC12 cells, primary antibody was diluted at 1:1000, 4°over night

| Contact information

Orders: order.cn@immunoway.com  
Support: support.cn@immunoway.com  
Telephone: 400-8787-807(China)  
Website: <http://www.immunoway.com.cn>  
Address: 2200 Ringwood Ave San Jose, CA 95131 USA



Please scan the QR code  
to access additional  
product information:  
**CENPH Rabbit pAb**

---

For Research Use Only. Not for Use in Diagnostic Procedures.

[Antibody](#) | [ELISA Kits](#) | [Protein](#) | [Reagents](#)