

## CR3L4 Rabbit pAb

CatalogNo: YN0319

### Key Features

#### Host Species

- Rabbit

#### Reactivity

- Human, Mouse, Rat

#### Applications

- WB, ELISA

#### MW

- 43kD (Observed)

#### Isotype

- IgG

### Recommended Dilution Ratios

WB 1:500-2000

ELISA 1:5000-20000

### Storage

#### Storage\*

-15°C to -25°C/1 year (Do not lower than -25°C)

#### Formulation

Liquid in PBS containing 50% glycerol, and 0.02% sodium azide.

### Basic Information

#### Clonality

Polyclonal

### Immunogen Information

#### Immunogen

Synthesized peptide derived from human protein . at AA range: 200-280

#### Specificity

CR3L4 Polyclonal Antibody detects endogenous levels of protein.

### Target Information

#### Gene name

CREB3L4 AIBZIP CREB4 JAL

**Protein Name** Cyclic AMP-responsive element-binding protein 3-like protein 4 (cAMP-responsive element-binding protein 3-like protein 4) (Androgen-induced basic leucine zipper protein) (AlbZIP) (Attaching to CRE-like 1) (ATCE1) (Cyclic AMP-responsive element-binding protein 4) (CREB-4) (cAMP-responsive element-binding protein 4) (Transcript induced in spermiogenesis protein 40) (Tisp40) (hJAL) [Cleaved into: Processed cyclic AMP-responsive element-binding protein 3-like protein 4]

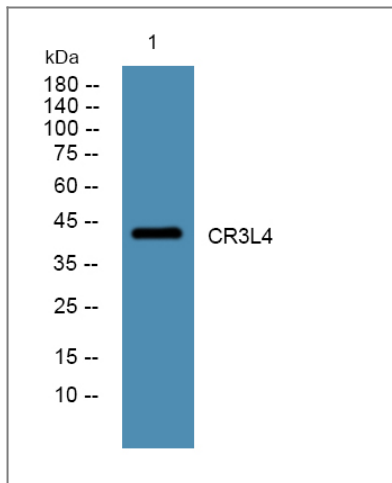
Organism	Gene ID	UniProt ID
Human	<a href="#">148327</a> ;	<a href="#">Q8TEY5</a> ;
Mouse		<a href="#">Q9D2A5</a> ;
Rat		<a href="#">Q5UEM7</a> ;

**Cellular Localization** Endoplasmic reticulum membrane; Single-pass type II membrane protein. Golgi apparatus membrane ; Single-pass type II membrane protein . May also be located in Golgi apparatus.; [Processed cyclic AMP-responsive element-binding protein 3-like protein 4]: Nucleus. Under ER stress the cleaved N-terminal cytoplasmic domain translocates into the nucleus. .

**Tissue specificity** According to PubMed:11830526, exclusively expressed in the prostate. Expressed in breast and prostate cancer cell lines. Expressed in prostatic luminal epithelial cells (at protein level). Expression is significantly more abundant in prostate cancer than in benign prostatic tissue (prostatic hyperplasia). According to PubMed:12111373, also expressed in brain, pancreas and skeletal muscle, and at lower levels in small intestine, testis, leukocyte and thymus.

**Function** Function:Transcriptional activator that may play a role in the unfolded protein response. Binds to the UPR element (UPRE) but not to CRE element. Preferentially binds DNA with to the consensus sequence 5'-T[GT]ACGT[GA][GT]-3' and has transcriptional activation activity from UPRE. Binds to NF-kappa-B site and has transcriptional activation activity from NF-kappa-B-containing regulatory elements.,induction:By androgens.,PTM:Controlled by regulated intramembrane proteolysis (RIP). Following ER stress a fragment containing the cytoplasmic transcription factor domain is released by proteolysis. The cleavage seems to be performed sequentially by site-1 and site-2 proteases (PS1 and PS2). PS1 cleavage may be suppressed by a determinant in the C-terminal region.,PTM:N-glycosylated in the C-terminal region.,similarity:Belongs to the bZIP family. ATF subfamily.,similarity:Contains 1 bZIP domain.,subcellular location:May also be located in Golgi apparatus.,subcellular location:Under ER stress the cleaved N-terminal cytoplasmic domain translocates into the nucleus.,subunit:Binds DNA as a dimer.,tissue specificity:According to PubMed:11830526 exclusively expressed in the prostate. Expressed in breast and prostate cancer cell lines. Expressed in prostatic luminal epithelial cells (at protein level). Expression is significantly more abundant in prostate cancer than in benign prostatic tissue (prostatic hyperplasia). According to PubMed:12111373 also expressed in brain, pancreas and skeletal muscle, and at lower levels in small intestine, testis, leukocyte and thymus.,

## | Validation Data



Western blot analysis of lysates from A431 cells, primary antibody was diluted at 1:1000, 4°over night

## Contact information

Orders: [order.cn@immunoway.com](mailto:order.cn@immunoway.com)  
Support: [support.cn@immunoway.com](mailto:support.cn@immunoway.com)  
Telephone: 400-8787-807(China)  
Website: <http://www.immunoway.com.cn>  
Address: 2200 Ringwood Ave San Jose, CA 95131 USA



Please scan the QR code  
to access additional  
product information:  
**CR3L4 Rabbit pAb**

For Research Use Only. Not for Use in Diagnostic Procedures.

[Antibody](#) | [ELISA Kits](#) | [Protein](#) | [Reagents](#)