

IRK15 Rabbit pAb

CatalogNo: YN0492

Key Features

Host Species

- Rabbit

Reactivity

- Human,Rat,Mouse,

Applications

- WB,ELISA

MW

- 41kD (Observed)

Isotype

- IgG

Recommended Dilution Ratios

WB 1:500-2000

ELISA 1:5000-20000

Storage

Storage* -15°C to -25°C/1 year(Do not lower than -25°C)

Formulation 1 mg/ml

Basic Information

Clonality Polyclonal

Immunogen Information

Immunogen Synthesized peptide derived from human protein . at AA range: 30-110

Specificity IRK15 Polyclonal Antibody detects endogenous levels of protein.

Target Information

Gene name KCNJ15 KCNJ14

Protein Name ATP-sensitive inward rectifier potassium channel 15 (Inward rectifier K(+) channel Kir1.3) (Inward rectifier K(+) channel Kir4.2) (Potassium channel, inwardly rectifying subfamily J member 15)

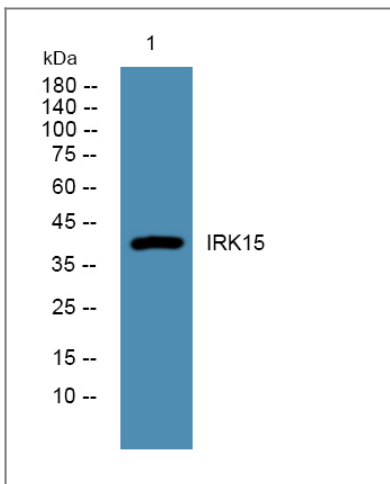
Organism	Gene ID	UniProt ID
Human	3772;	Q99712;
Mouse		O88932;
Rat		Q91ZF1;

Cellular Localization Membrane; Multi-pass membrane protein.

Tissue specificity Kidney,

Function Function:Inward rectifier potassium channels are characterized by a greater tendency to allow potassium to flow into the cell rather than out of it. Their voltage dependence is regulated by the concentration of extracellular potassium; as external potassium is raised, the voltage range of the channel opening shifts to more positive voltages. The inward rectification is mainly due to the blockage of outward current by internal magnesium.,similarity:Belongs to the inward rectifier-type potassium channel family.,subunit:Interacts with INADL.,

Validation Data



Western blot analysis of lysates from HCT116 cells, primary antibody was diluted at 1:1000, 4° over night

Contact information

Orders: order.cn@immunoway.com
Support: support.cn@immunoway.com
Telephone: 408-747-0189 (USA) 400-8787-807(China)
Website: <http://www.immunoway.com.cn>
Address: 2200 Ringwood Ave San Jose, CA 95131 USA



Please scan the QR code to access additional product information:
IRK15 Rabbit pAb

