

CEA20 Rabbit pAb

CatalogNo: YN0560

Key Features

Host Species

- Rabbit

Reactivity

- Human, Mouse

Applications

- WB, ELISA

MW

- 64kD (Observed)

Isotype

- IgG

Recommended Dilution Ratios

WB 1:500-2000

ELISA 1:5000-20000

Storage

Storage* -15°C to -25°C/1 year (Do not lower than -25°C)

Formulation 1 mg/ml

Basic Information

Clonality Polyclonal

Immunogen Information

Immunogen Synthesized peptide derived from part region of human protein

Specificity CEA20 Polyclonal Antibody detects endogenous levels of protein.

Target Information

Gene name CEACAM20 UNQ9366/PRO34155

Protein Name Carcinoembryonic antigen-related cell adhesion molecule 20

Organism

Gene ID

UniProt ID

Human

[125931;](#)

[Q6UY09;](#)

Cellular Localization

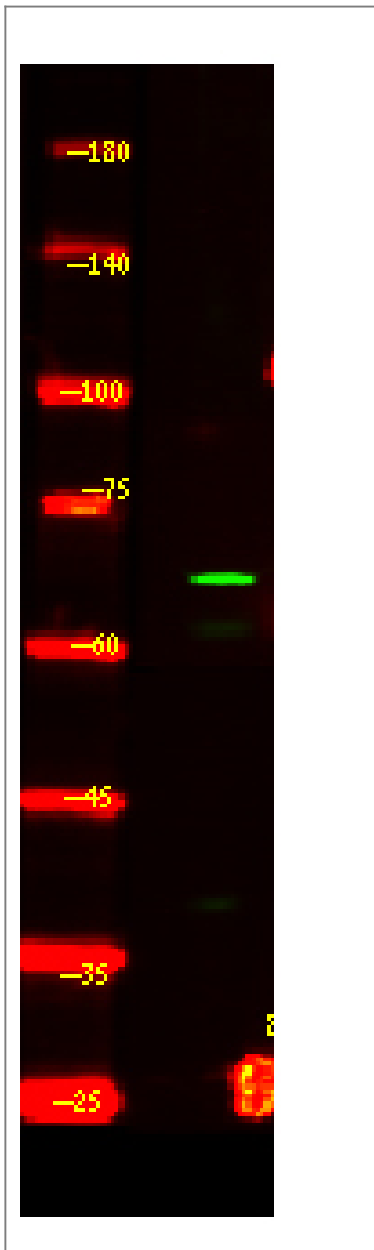
Cell projection, microvillus membrane ; Single-pass type I membrane protein . Apical cell membrane ; Single-pass type I membrane protein . Colocalizes with PTPRH and CEACAM1 at the apical brush border of intestinal cells.

Tissue specificity Small intestine,

Function

similarity:Belongs to the immunoglobulin superfamily. CEA family.,similarity:Contains 4 Ig-like C2-type (immunoglobulin-like) domains.,

Validation Data



Western Blot analysis of HEK293 lysis, using primary antibody at 1:1000 dilution. Secondary antibody(catalog#:RS23920) was diluted at 1:10000

| Contact information

Orders: order.cn@immunoway.com
Support: support.cn@immunoway.com
Telephone: 408-747-0189 (USA) 400-8787-807(China)
Website: <http://www.immunoway.com.cn>
Address: 2200 Ringwood Ave San Jose, CA 95131 USA



Please scan the QR code
to access additional
product information:
CEA20 Rabbit pAb

For Research Use Only. Not for Use in Diagnostic Procedures.

[Antibody](#) | [ELISA Kits](#) | [Protein](#) | [Reagents](#)