

HAUS2 Rabbit pAb

CatalogNo: YN0574

Key Features

Host Species

- Rabbit

Reactivity

- Human, Mouse

Applications

- WB, ELISA

MW

- 25kD (Observed)

Isotype

- IgG

Recommended Dilution Ratios

WB 1:500-2000

ELISA 1:5000-20000

Storage

Storage* -15°C to -25°C/1 year (Do not lower than -25°C)

Formulation Liquid in PBS containing 50% glycerol, and 0.02% sodium azide.

Basic Information

Clonality Polyclonal

Immunogen Information

Immunogen Synthesized peptide derived from part region of human protein

Specificity HAUS2 Polyclonal Antibody detects endogenous levels of protein.

Target Information

Gene name HAUS2 C15orf25 CEP27

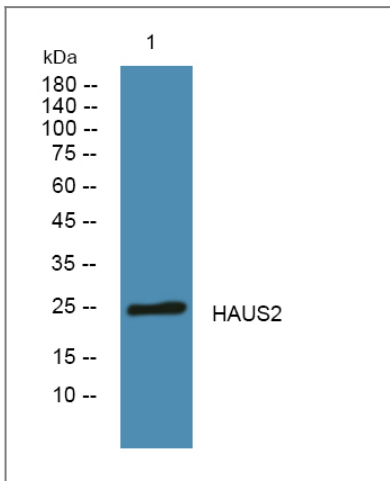
Protein Name HAUS augmin-like complex subunit 2 (Centrosomal protein of 27 kDa)

Organism	Gene ID	UniProt ID
Human	55142 ;	Q9NVX0 ;
Mouse		Q9CQS9 ;

Cellular Localization Cytoplasm, cytoskeleton, microtubule organizing center, centrosome . Cytoplasm, cytoskeleton, spindle . Localizes to interphase centrosomes and to mitotic spindle microtubules. .

Function M phase of mitotic cell cycle, microtubule cytoskeleton organization, mitotic cell cycle, M phase, nuclear division, cytoskeleton organization, microtubule-based process, cell cycle, spindle organization, mitosis, cell cycle process, cell cycle phase, microtubule organizing center organization, organelle fission, spindle assembly, centrosome organization, cell division,

Validation Data



Western blot analysis of lysates from DU145 cells, primary antibody was diluted at 1:1000, 4° over night

Contact information

Orders: order.cn@immunoway.com
Support: support.cn@immunoway.com
Telephone: 408-747-0189 (USA) 400-8787-807 (China)
Website: <http://www.immunoway.com.cn>
Address: 2200 Ringwood Ave San Jose, CA 95131 USA



Please scan the QR code to access additional product information:
HAUS2 Rabbit pAb