

## C1T9B Rabbit pAb

CatalogNo: YN0613

### Key Features

**Host Species**

- Rabbit

**Reactivity**

- Human

**Applications**

- WB, ELISA

**MW**

- 36kD (Observed)

**Isotype**

- IgG

### Recommended Dilution Ratios

**WB 1:500-2000****ELISA 1:5000-20000**

### Storage

**Storage\***

-15°C to -25°C/1 year(Do not lower than -25°C)

**Formulation**

Liquid in PBS containing 50% glycerol, and 0.02% sodium azide.

### Basic Information

**Clonality**

Polyclonal

### Immunogen Information

**Immunogen**

Synthesized peptide derived from part region of human protein

**Specificity**

C1T9B Polyclonal Antibody detects endogenous levels of protein.

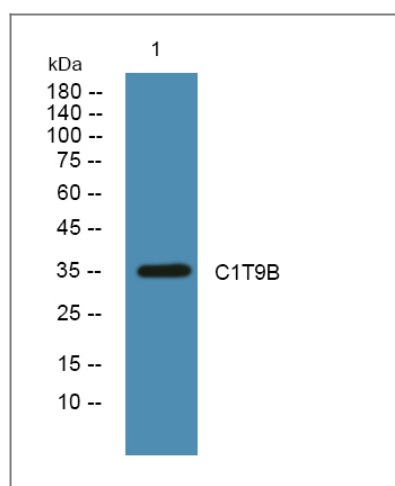
### Target Information

**Gene name**

C1QTNF9B

<b>Protein Name</b>	Complement C1q and tumor necrosis factor-related protein 9B (C1q/TNF-related protein 9B) (CTRP9B) (Complement C1q and tumor necrosis factor-related protein 9-like)		
	<b>Organism</b>	<b>Gene ID</b>	<b>UniProt ID</b>
	Human	<a href="#">387911</a> ;	<a href="#">B2RNN3</a> ;
<b>Cellular Localization</b>	Secreted . Heteromeric complex formation with CTRP9A or ADIPOQ is required for secretion, otherwise, it is retained in the endoplasmic reticulum.		
<b>Tissue specificity</b>	Expressed at low levels. Not expressed in adipose tissues.		
<b>Function</b>	similarity:Contains 1 C1q domain.,similarity:Contains 3 collagen-like domains.,		

## Validation Data



Western blot analysis of lysates from Jurkat cells, primary antibody was diluted at 1:1000, 4° over night

## Contact information

Orders: [order.cn@immunoway.com](mailto:order.cn@immunoway.com)  
 Support: [support.cn@immunoway.com](mailto:support.cn@immunoway.com)  
 Telephone: 400-8787-807(China)  
 Website: <http://www.immunoway.com.cn>  
 Address: 2200 Ringwood Ave San Jose, CA 95131 USA



Please scan the QR code to access additional product information:  
**C1T9B Rabbit pAb**

For Research Use Only. Not for Use in Diagnostic Procedures.

[Antibody](#) | [ELISA Kits](#) | [Protein](#) | [Reagents](#)