

DHRS9 Rabbit pAb

CatalogNo: YN0639

Key Features

Host Species

- Rabbit

Reactivity

- Human, Mouse, Rat

Applications

- WB, ELISA

MW

- 35kD (Observed)

Isotype

- IgG

Recommended Dilution Ratios

WB 1:500-2000**ELISA 1:5000-20000**

Storage

Storage*

-15°C to -25°C/1 year (Do not lower than -25°C)

Formulation

Liquid in PBS containing 50% glycerol, and 0.02% sodium azide.

Basic Information

Clonality

Polyclonal

Immunogen Information

Immunogen

Synthesized peptide derived from part region of human protein

Specificity

DHRS9 Polyclonal Antibody detects endogenous levels of protein.

Target Information

Gene name

DHRS9 UNQ835/PRO1773

Protein Name Dehydrogenase/reductase SDR family member 9 (3-alpha hydroxysteroid dehydrogenase) (3-alpha-HSD) (NADP-dependent retinol dehydrogenase/reductase) (RDH-E2) (RDHL) (Short-chain dehydrogenase/reductase retSDR8) (Tracheobronchial epithelial cell-specific retinol dehydrogenase) (RDH-TBE)

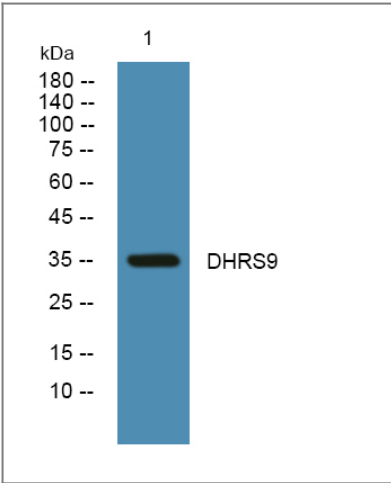
Organism	Gene ID	UniProt ID
Human	10170 ;	Q9BPW9 ;
Mouse		Q58NB6 ;
Rat		Q8VD48 ;

Cellular Localization Microsome membrane . Endoplasmic reticulum membrane . Associated with microsomal membranes.

Tissue specificity Highly expressed in trachea and epidermis. Detected at lower levels in spinal cord, bone marrow, brain, tongue, esophagus, heart, colon, testis, placenta, lung, skeletal muscle and lymph node.

Function Function:3-alpha-hydroxysteroid dehydrogenase that converts 3-alpha-tetrahydroprogesterone (allopregnanolone) to dihydroxyprogesterone and 3-alpha-androstanediol to dihydroxyprogesterone. May play a role in the biosynthesis of retinoic acid from retinaldehyde, but seems to have low activity with retinoids. Can utilize both NADH and NADPH.,similarity:Belongs to the short-chain dehydrogenases/reductases (SDR) family.,subcellular location:Associated with microsomal membranes.,subunit:Homotetramer.,tissue specificity:Highly expressed in trachea and epidermis. Detected at lower levels in spinal cord, bone marrow, brain, tongue, esophagus, heart, colon, testis, placenta, lung, skeletal muscle and lymph node.,

Validation Data



Western blot analysis of lysates from DU145 cells, primary antibody was diluted at 1:1000, 4°over night

Contact information

Orders: order.cn@immunoway.com
Support: support.cn@immunoway.com
Telephone: 400-8787-807(China)
Website: <http://www.immunoway.com.cn>
Address: 2200 Ringwood Ave San Jose, CA 95131 USA



Please scan the QR code
to access additional
product information:
DHR59 Rabbit pAb

For Research Use Only. Not for Use in Diagnostic Procedures.

[Antibody](#) | [ELISA Kits](#) | [Protein](#) | [Reagents](#)