

CXB5 Rabbit pAb

CatalogNo: YN0724

Key Features

Host Species

- Rabbit

Reactivity

- Human, Mouse, Rat

Applications

- WB, ELISA

MW

- 30kD (Observed)

Isotype

- IgG

Recommended Dilution Ratios

WB 1:500-2000

ELISA 1:5000-20000

Storage

Storage* -15°C to -25°C/1 year (Do not lower than -25°C)

Formulation 1 mg/ml

Basic Information

Clonality Polyclonal

Immunogen Information

Immunogen Synthesized peptide derived from part region of human protein

Specificity CXB5 Polyclonal Antibody detects endogenous levels of protein.

Target Information

Gene name GJB5

Protein Name Gap junction beta-5 protein (Connexin-31.1) (Cx31.1)

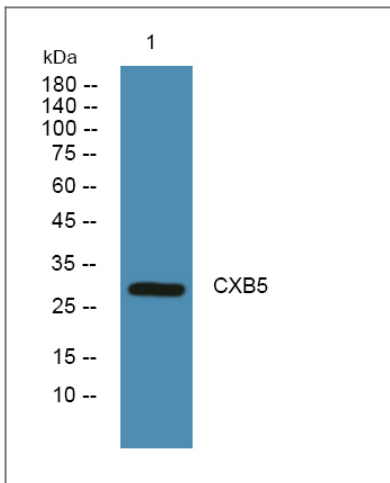
Organism	Gene ID	UniProt ID
Human	2709 ;	O95377 ;
Mouse		Q02739 ;
Rat		P28232 ;

Cellular Localization Cell membrane; Multi-pass membrane protein. Cell junction, gap junction.

Tissue specificity Pancreas,

Function Function:One gap junction consists of a cluster of closely packed pairs of transmembrane channels, the connexons, through which materials of low MW diffuse from one cell to a neighboring cell.,similarity:Belongs to the connexin family. Beta-type (group I) subfamily.,subunit:A connexon is composed of a hexamer of connexins.,

Validation Data



Western blot analysis of lysates from SH-SY5Y cells, primary antibody was diluted at 1:1000, 4°over night

Contact information

Orders: order.cn@immunoway.com
Support: support.cn@immunoway.com
Telephone: 408-747-0189 (USA) 400-8787-807(China)
Website: <http://www.immunoway.com.cn>
Address: 2200 Ringwood Ave San Jose, CA 95131 USA



Please scan the QR code to access additional product information:
CXB5 Rabbit pAb

