

REM2 Rabbit pAb

CatalogNo: YN0747

Key Features

Host Species

- Rabbit

Reactivity

- Human, Mouse, Rat

Applications

- WB, ELISA

MW

- 37kD (Observed)

Isotype

- IgG

Recommended Dilution Ratios

WB 1:500-2000**ELISA 1:5000-20000**

Storage

Storage*

-15°C to -25°C/1 year (Do not lower than -25°C)

Formulation

Liquid in PBS containing 50% glycerol, 0.5% BSA and 0.02% sodium azide.

Basic Information

Clonality

Polyclonal

Immunogen Information

Immunogen

Synthesized peptide derived from part region of human protein

Specificity

REM2 Polyclonal Antibody detects endogenous levels of protein.

Target Information

Gene name

REM2

Protein Name

GTP-binding protein REM 2 (Rad and Gem-like GTP-binding protein 2)

Organism	Gene ID	UniProt ID
Human	161253 ;	Q8IYK8 ;
Mouse		Q8VEL9 ;
Rat		Q9WTY2 ;

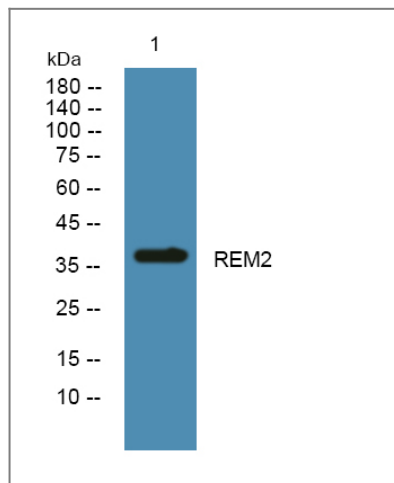
Cellular Localization

Cell membrane .

Tissue specificity Ovary,**Function**

Caution:It is uncertain whether Met-1 or Met-59 is the initiator.,Function:Binds GTP saturably and exhibits a low intrinsic rate of GTP hydrolysis.,similarity:Belongs to the small GTPase superfamily. RGK family.,

Validation Data



Western blot analysis of lysates from A431 cells, primary antibody was diluted at 1:1000, 4° over night

Contact information

Orders: order.cn@immunoway.com
Support: support.cn@immunoway.com
Telephone: 400-8787-807(China)
Website: <http://www.immunoway.com.cn>
Address: 2200 Ringwood Ave San Jose, CA 95131 USA



Please scan the QR code to access additional product information:
REM2 Rabbit pAb