

## GNA12 Rabbit pAb

CatalogNo: YN0752

### Key Features

#### Host Species

- Rabbit

#### Reactivity

- Human, Mouse, Rat

#### Applications

- WB, ELISA

#### MW

- 41kD (Observed)

#### Isotype

- IgG

### Recommended Dilution Ratios

**WB 1:500-2000**

**ELISA 1:5000-20000**

### Storage

**Storage\*** -15°C to -25°C/1 year (Do not lower than -25°C)

**Formulation** 1 mg/ml

### Basic Information

**Clonality** Polyclonal

### Immunogen Information

**Immunogen** Synthesized peptide derived from part region of human protein

**Specificity** GNA12 Polyclonal Antibody detects endogenous levels of protein.

### Target Information

**Gene name** GNA12

**Protein Name** Guanine nucleotide-binding protein subunit alpha-12 (G alpha-12) (G-protein subunit alpha-12)

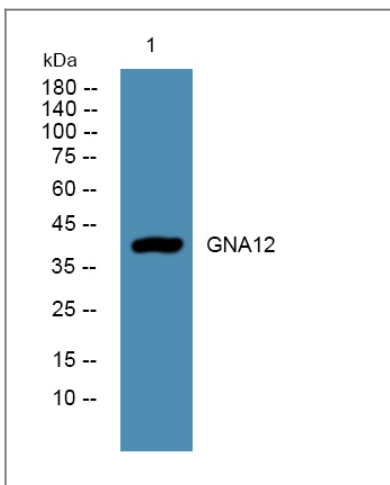
Organism	Gene ID	UniProt ID
Human	<a href="#">2768;</a>	<a href="#">Q03113;</a>
Mouse		<a href="#">P27600;</a>
Rat		<a href="#">Q63210;</a>

**Cellular Localization** Cell membrane ; Lipid-anchor . Lateral cell membrane ; Lipid-anchor . Cytoplasm . CDH1 enhances cell membrane localization. .

**Tissue specificity** Brain,Pancreas,Placenta,Uterus,

**Function** Function:Guanine nucleotide-binding proteins (G proteins) are involved as modulators or transducers in various transmembrane signaling systems.,similarity:Belongs to the G-alpha family. G(12) subfamily.,subunit:G proteins are composed of 3 units; alpha, beta and gamma. The alpha chain contains the guanine nucleotide binding site. Interacts with UBXD5.,

## Validation Data



Western blot analysis of lysates from DU145 cells, primary antibody was diluted at 1:1000, 4° over night

## Contact information

Orders: [order.cn@immunoway.com](mailto:order.cn@immunoway.com)  
Support: [support.cn@immunoway.com](mailto:support.cn@immunoway.com)  
Telephone: 408-747-0189 (USA) 400-8787-807(China)  
Website: <http://www.immunoway.com.cn>  
Address: 2200 Ringwood Ave San Jose, CA 95131 USA



Please scan the QR code to access additional product information:  
**GNA12 Rabbit pAb**

