

GNA11 Rabbit pAb

CatalogNo: YN0757

Key Features

Host Species

- Rabbit

Reactivity

- Human,Rat,Mouse

Applications

- WB,ELISA

MW

- 39kD (Observed)

Isotype

- IgG

Recommended Dilution Ratios

WB 1:500-2000

ELISA 1:5000-20000

Storage

Storage* -15°C to -25°C/1 year(Do not lower than -25°C)

Formulation Liquid in PBS containing 50% glycerol, and 0.02% sodium azide.

Basic Information

Clonality Polyclonal

Immunogen Information

Immunogen Synthesized peptide derived from part region of human protein

Specificity GNA11 Polyclonal Antibody detects endogenous levels of protein.

Target Information

Gene name GNA11 GA11

Protein Name Guanine nucleotide-binding protein subunit alpha-11 (G alpha-11) (G-protein subunit alpha-11) (Guanine nucleotide-binding protein G(y) subunit alpha)

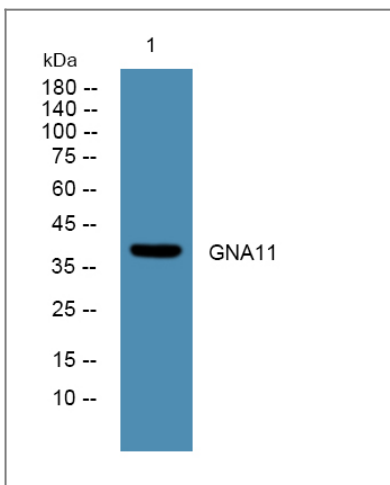
Organism	Gene ID	UniProt ID
Human	2767;	P29992;
Mouse		P21278;
Rat		Q9JID2;

Cellular Localization Cell membrane ; Lipid-anchor . Cytoplasm . In testicular cells, expressed exclusively in the cytoplasm.

Tissue specificity Expressed in testis.

Function Function:Guanine nucleotide-binding proteins (G proteins) are involved as modulators or transducers in various transmembrane signaling systems. Acts as an activator of phospholipase C.,similarity:Belongs to the G-alpha family. G(q) subfamily.,subunit:G proteins are composed of 3 units; alpha, beta and gamma. The alpha chain contains the guanine nucleotide binding site.,

Validation Data



Western blot analysis of lysates from Jurkat cells, primary antibody was diluted at 1:1000, 4° over night

Contact information

Orders: order.cn@immunoway.com
Support: support.cn@immunoway.com
Telephone: 400-8787-807(China)
Website: <http://www.immunoway.com.cn>
Address: 2200 Ringwood Ave San Jose, CA 95131 USA



Please scan the QR code to access additional product information:
GNA11 Rabbit pAb

