

NPW Rabbit pAb

CatalogNo: YN0978

Key Features

Host Species

- Rabbit

Reactivity

- Human,Rat

Applications

- WB,ELISA

MW

- 18kD (Observed)

Isotype

- IgG

Recommended Dilution Ratios

WB 1:500-2000

ELISA 1:5000-20000

Storage

Storage* -15°C to -25°C/1 year(Do not lower than -25°C)

Formulation Liquid in PBS containing 50% glycerol, and 0.02% sodium azide.

Basic Information

Clonality Polyclonal

Immunogen Information

Immunogen Synthesized peptide derived from human protein . at AA range: 90-170

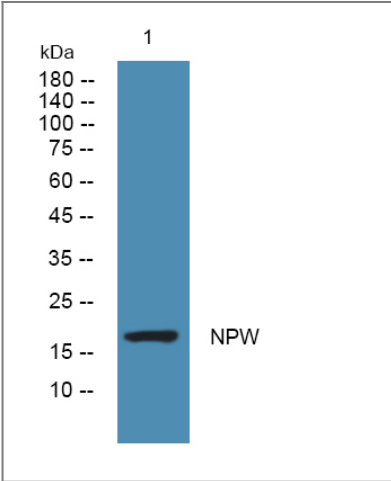
Specificity NPW Polyclonal Antibody detects endogenous levels of protein.

Target Information

Gene name NPW PPL8 PPNPW

Protein Name	Neuropeptide W (Preproprotein L8) (hPPL8) [Cleaved into: Neuropeptide W-23 (NPW23) (hL8); Neuropeptide W-30 (NPW30) (hL8C)]		
	Organism	Gene ID	UniProt ID
	Human	283869 ;	Q8N729 ;
	Rat		Q8K1M5 ;
Cellular Localization	Secreted.		
Tissue specificity	Detected at high levels in the substantia nigra, fetal kidney and trachea; at lower levels in testis, uterus, ovary and placenta. Not detectable in many regions of the central nervous system. Also detected at high levels in lymphoblastic leukemia and colorectal adenocarcinoma.		
Function	Function:Plays a regulatory role in the organization of neuroendocrine signals accessing the anterior pituitary gland. Stimulates water drinking and food intake. May play a role in the hypothalamic response to stress (By similarity). NPW23 activates GPR7 and GPR8 more efficiently than NPW30.,similarity:Belongs to the neuropeptide B/W family.,tissue specificity:Detected at high levels in the substantia nigra, fetal kidney and trachea; at lower levels in testis, uterus, ovary and placenta. Not detectable in many regions of the central nervous system. Also detected at high levels in lymphoblastic leukemia and colorectal adenocarcinoma.,		

| Validation Data



Western blot analysis of lysates from PC12 cells, primary antibody was diluted at 1:1000, 4°over night

| Contact information

Orders: order.cn@immunoway.com
Support: support.cn@immunoway.com
Telephone: 400-8787-807(China)
Website: <http://www.immunoway.com.cn>
Address: 2200 Ringwood Ave San Jose, CA 95131 USA



Please scan the QR code
to access additional
product information:
NPW Rabbit pAb

For Research Use Only. Not for Use in Diagnostic Procedures.

[Antibody](#) | [ELISA Kits](#) | [Protein](#) | [Reagents](#)