

S1A7A Rabbit pAb

CatalogNo: YN1120

Key Features

Host Species

- Rabbit

Reactivity

- Human

Applications

- WB,ELISA

MW

- 11kD (Observed)

Isotype

- IgG

Recommended Dilution Ratios

WB 1:500-2000

ELISA 1:5000-20000

Storage

Storage*

-15°C to -25°C/1 year(Do not lower than -25°C)

Formulation

Liquid in PBS containing 50% glycerol, and 0.02% sodium azide.

Basic Information

Clonality

Polyclonal

Immunogen Information

Immunogen

Synthesized peptide derived from human protein . at AA range: 30-110

Specificity

S1A7A Polyclonal Antibody detects endogenous levels of protein.

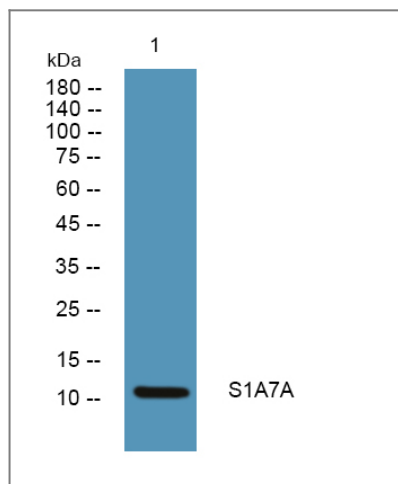
Target Information

Gene name

S100A7A S100A15 S100A7L1

Protein Name	Protein S100-A7A (S100 calcium-binding protein A15) (S100 calcium-binding protein A7-like 1) (S100 calcium-binding protein A7A)		
	Organism	Gene ID	UniProt ID
	Human	338324;	Q86SG5;
Cellular Localization	Cytoplasm .		
Tissue specificity	Overexpressed in psoriasis.		
Function	Function:May be involved in epidermal differentiation and inflammation and might therefore be important for the pathogenesis of psoriasis and other diseases.,similarity:Belongs to the S-100 family.,similarity:Contains 2 EF-hand domains.,tissue specificity:Overexpressed in psoriasis.,		

Validation Data



Western blot analysis of lysates from DU145 cells, primary antibody was diluted at 1:1000, 4°over night

Contact information

Orders: order.cn@immunoway.com
 Support: support.cn@immunoway.com
 Telephone: 400-8787-807(China)
 Website: <http://www.immunoway.com.cn>
 Address: 2200 Ringwood Ave San Jose, CA 95131 USA



Please scan the QR code
 to access additional
 product information:
S1A7A Rabbit pAb