

VATB2 Rabbit pAb

CatalogNo: YN1508

Orthogonal Validated 

Key Features

Host Species

- Rabbit

Reactivity

- Human,Rat,Mouse,Swine

Applications

- WB,ELISA

MW

- 56kD (Observed)

Isotype

- IgG

Recommended Dilution Ratios

WB 1:500-2000**ELISA 1:5000-20000**

Storage

Storage* -15°C to -25°C/1 year(Do not lower than -25°C)**Formulation** Liquid in PBS containing 50% glycerol, 0.5% BSA and 0.02% sodium azide.

Basic Information

Clonality Polyclonal

Immunogen Information

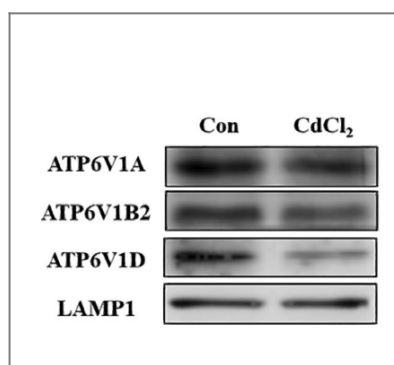
Immunogen Synthesized peptide derived from part region of human protein**Specificity** VATB2 Polyclonal Antibody detects endogenous levels of protein.

Target Information

Gene name ATP6V1B2 ATP6B2 VPP3

Protein Name	V-type proton ATPase subunit B, brain isoform (V-ATPase subunit B 2) (Endomembrane proton pump 58 kDa subunit) (HO57) (Vacuolar proton pump subunit B 2)		
	Organism	Gene ID	UniProt ID
	Human	526;	P21281;
	Mouse		P62814;
	Rat		P62815;
Cellular Localization	Apical cell membrane . Melanosome . Cytoplasm . Cytoplasmic vesicle, secretory vesicle, synaptic vesicle membrane ; Peripheral membrane protein . Cytoplasmic vesicle, clathrin-coated vesicle membrane ; Peripheral membrane protein . Identified by mass spectrometry in melanosome fractions from stage I to stage IV. .		
Tissue specificity	Kidney; localizes to early distal nephron, encompassing thick ascending limbs and distal convoluted tubules (at protein level).		
Function	Function:Non-catalytic subunit of the peripheral V1 complex of vacuolar ATPase. V-ATPase is responsible for acidifying a variety of intracellular compartments in eukaryotic cells.,similarity:Belongs to the ATPase alpha/beta chains family.,subcellular location:Endomembrane. Identified by mass spectrometry in melanosome fractions from stage I to stage IV.,subunit:V-ATPase is an heteromultimeric enzyme composed of a peripheral catalytic V1 complex (main components: subunits A, B, C, D, E, and F) attached to an integral membrane V0 proton pore complex (main component: the proteolipid protein).,		

Validation Data



Autophagy flux inhibition mediated by lysosomal dysfunction participates in the cadmium exposure-induced cardiotoxicity in swine 2022 Mar 14. WB Swine 1:1000 myocardium

Contact information

Orders: order.cn@immunoway.com
 Support: support.cn@immunoway.com
 Telephone: 400-8787-807(China)
 Website: <http://www.immunoway.com.cn>
 Address: 2200 Ringwood Ave San Jose, CA 95131 USA



Please scan the QR code to access additional product information:
VATB2 Rabbit pAb

