

## FA58A Rabbit pAb

CatalogNo: YN1591

### Key Features

#### Host Species

- Rabbit

#### Reactivity

- Human, Mouse, Rat

#### Applications

- WB, ELISA

#### MW

- 27kD (Observed)

#### Isotype

- IgG

### Storage

**Storage\*** -15°C to -25°C/1 year (Do not lower than -25°C)

**Formulation** Liquid in PBS containing 50% glycerol, 0.5% BSA and 0.02% sodium azide.

### Recommended Dilution Ratios

**WB 1:500-2000**

**ELISA 1:5000-20000**

### Basic Information

**Clonality** Polyclonal

### Immunogen Information

**Immunogen** Synthesized peptide derived from human protein . at AA range: 30-110

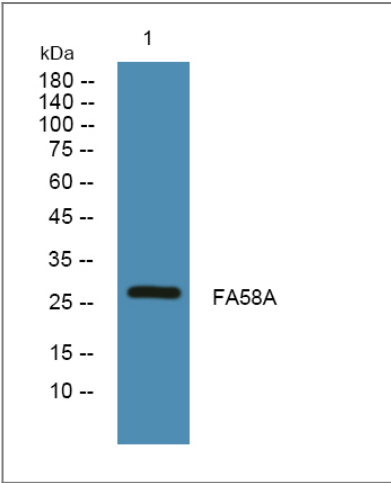
**Specificity** FA58A Polyclonal Antibody detects endogenous levels of protein.

### Target Information

**Gene name** FAM58A

<b>Protein Name</b>	Cyclin-related protein FAM58A (Cyclin-M)		
	<b>Organism</b>	<b>Gene ID</b>	<b>UniProt ID</b>
	Human	<a href="#">92002;</a>	<a href="#">Q8N1B3;</a>
	Mouse		<a href="#">Q8QZR8;</a>
	Rat		<a href="#">Q4QQW5;</a>
<b>Cellular Localization</b>	cyclin-dependent protein kinase holoenzyme complex,nucleus,		
<b>Tissue specificity</b>	B-cell,Blood,Kidney,Lung,		
<b>Function</b>	Disease:Defects in FAM58A are the cause of toe syndactyly, telecanthus, and anogenital and renal malformations (STAR) [MIM:300707]; also known as STAR syndrome or syndactyly with renal and anogenital malformations.,Function:May have a role in cell proliferation.,similarity:Belongs to the cyclin family. Cyclin-like FAM58 subfamily.,subunit:Interacts with SALL1.,		

| Validation Data



Western blot analysis of lysates from PC12 cells, primary antibody was diluted at 1:1000, 4°over night

| Contact information

Orders: order.cn@immunoway.com  
Support: support.cn@immunoway.com  
Telephone: 400-8787-807(China)  
Website: http://www.immunoway.com.cn  
Address: 2200 Ringwood Ave San Jose, CA 95131 USA



Please scan the QR code to access additional product information:  
**FA58A Rabbit pAb**

