

DUS26 Rabbit pAb

CatalogNo: YN1694

Key Features

Host Species

- Rabbit

Reactivity

- Human, Mouse, Rat

Applications

- WB, ELISA

MW

- 23kD (Observed)

Isotype

- IgG

Recommended Dilution Ratios

WB 1:500-2000

ELISA 1:5000-20000

Storage

Storage* -15°C to -25°C/1 year (Do not lower than -25°C)

Formulation 1 mg/ml

Basic Information

Clonality Polyclonal

Immunogen Information

Immunogen Synthesized peptide derived from human protein . at AA range: 130-210

Specificity DUS26 Polyclonal Antibody detects endogenous levels of protein.

Target Information

Gene name DUSP26 DUSP24 LDP4 MKP8 NATA1 SKRP3

Protein Name

Dual specificity protein phosphatase 26 (Dual specificity phosphatase SKRP3) (Low-molecular-mass dual-specificity phosphatase 4) (DSP-4) (LDP-4) (Mitogen-activated protein kinase phosphatase 8) (MAP kinase phosphatase 8) (MKP-8) (Novel amplified gene in thyroid anaplastic cancer)

Organism	Gene ID	UniProt ID
Human	78986 ;	Q9BV47 ;
Mouse		Q9D700 ;
Rat		Q5FV19 ;

Cellular Localization

Cytoplasm. Nucleus. Golgi apparatus.

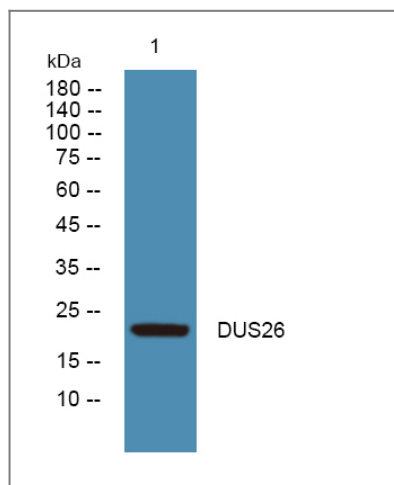
Tissue specificity

Brain. In the brain it is expressed ubiquitously except in the hippocampus. Expressed in embryonal cancers (retinoblastoma, neuroepithelioma and neuroblastoma) and in anaplastic thyroid cancer.

Function

Catalytic activity: A phosphoprotein + H₂O = a protein + phosphate., Catalytic activity: Protein tyrosine phosphate + H₂O = protein tyrosine + phosphate., Function: Inactivates MAPK1 and MAPK3 which leads to dephosphorylation of heat shock factor protein 4 and a reduction in its DNA-binding activity. Inhibits MAP kinase p38 by dephosphorylating it and inhibits p38-mediated apoptosis in anaplastic thyroid cancer cells. Can also induce activation of MAP kinase p38 and c-Jun N-terminal kinase (JNK)., similarity: Belongs to the protein-tyrosine phosphatase family. Non-receptor class dual specificity subfamily., similarity: Contains 1 tyrosine-protein phosphatase domain., subunit: Interacts with HSF4., tissue specificity: Brain. In the brain it is expressed ubiquitously except in the hippocampus. Expressed in embryonal cancers (retinoblastoma, neuroepithelioma and neuroblastoma) and in anaplastic thyroid cancer.,

Validation Data



Western blot analysis of lysates from SH-SY5Y cells, primary antibody was diluted at 1:1000, 4° over night

Contact information

Orders: order.cn@immunoway.com
Support: support.cn@immunoway.com
Telephone: 408-747-0189 (USA) 400-8787-807(China)
Website: <http://www.immunoway.com.cn>
Address: 2200 Ringwood Ave San Jose, CA 95131 USA



Please scan the QR code
to access additional
product information:

DUS26 Rabbit pAb

For Research Use Only. Not for Use in Diagnostic Procedures.

[Antibody](#) | [ELISA Kits](#) | [Protein](#) | [Reagents](#)