

OSTCN Rabbit pAb

CatalogNo: YN2113

Key Features

Host Species

- Rabbit

Reactivity

- Human,Rat,Mouse

Applications

- WB IF,ELISA

MW

- 11kD (Observed)

Isotype

- IgG

Recommended Dilution Ratios

WB 1:500-2000

IF 1:100-300

ELISA 1:5000-20000

Not yet tested in other applications.

Storage

Storage*

-15°C to -25°C/1 year(Do not lower than -25°C)

Formulation

Liquid in PBS containing 50% glycerol, and 0.02% sodium azide.

Basic Information

Clonality

Polyclonal

Immunogen Information

Immunogen

Synthesized peptide derived from part region of human protein AA range: 31-80

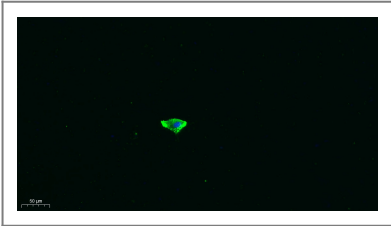
Specificity

OSTCN Polyclonal Antibody detects endogenous levels of protein.

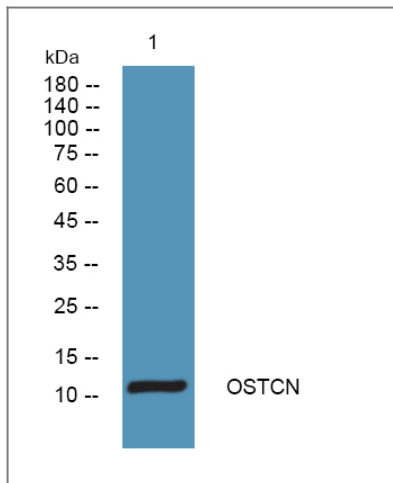
Target Information

Gene name	BGLAP		
Protein Name	Osteocalcin (Bone Gla protein) (BGP) (Gamma-carboxyglutamic acid-containing protein)		
	Organism	Gene ID	UniProt ID
	Human	632;	P02818;
	Mouse		P86546;
	Rat		P04640;
Cellular Localization	Secreted.		
Tissue specificity	Brain,Cerebellum,Colon,Lung carcinoma,Skin,Testis,Uterus,		
Function	<p>Function:Constitutes 1-2% of the total bone protein. It binds strongly to apatite and calcium.,Function:Part of the MIS12 complex which is required for normal chromosome alignment and segregation and kinetochore formation during mitosis. May act as a cotranscription partner of NFE2L2 involved in regulation of polyamine-induced transcription of SSAT.,induction:By polyamine analogs in analog-sensitive H157 cells.,online information:Osteocalcin entry,PTM:Gamma-carboxyglutamate residues are formed by vitamin K dependent carboxylation. These residues are essential for the binding of calcium.,similarity:Belongs to the osteocalcin/matrix Gla protein family.,similarity:Contains 1 Gla (gamma-carboxy-glutamate) domain.,subcellular location:Associated with the kinetochore.,subunit:Component of the MIS12 complex composed of MIS12, DSN1, NSL1 and PMF1. Interacts with COPS7A. Interacts via its coiled-coil domain with the leucine-zipper domain of NFE2L2. The interaction with NFE2L2 is required for the transcriptional regulation of SSAT.,tissue specificity:Highest levels of expression in heart and skeletal muscle, with significant levels expressed in kidney and liver.,</p>		

| Validation Data



Immunofluorescence analysis of A549. 1,primary Antibody was diluted at 1:200(4°C overnight). 2, Goat Anti Rabbit IgG (H&L) - Alexa Fluor 488 Secondary antibody was diluted at 1:1000(room temperature, 50min).3, Picture B: DAPI(blue) 10min.



Western blot analysis of lysates from KB cells, primary antibody was diluted at 1:1000, 4° over night

Contact information

Orders: order.cn@immunoway.com
 Support: support.cn@immunoway.com
 Telephone: 400-8787-807(China)
 Website: <http://www.immunoway.com.cn>
 Address: 2200 Ringwood Ave San Jose, CA 95131 USA



Please scan the QR code to access additional product information:
OSTCN Rabbit pAb

For Research Use Only. Not for Use in Diagnostic Procedures.

[Antibody](#) | [ELISA Kits](#) | [Protein](#) | [Reagents](#)