

CALCA Rabbit pAb

CatalogNo: YN2444

Key Features

Host Species

- Rabbit

Reactivity

- Human, Mouse, Rat

Applications

- WB, ELISA

MW

- 14kD (Observed)

Isotype

- IgG

Storage

Storage* -15°C to -25°C/1 year (Do not lower than -25°C)

Formulation Liquid in PBS containing 50% glycerol, 0.5% BSA and 0.02% sodium azide.

Recommended Dilution Ratios

WB 1:500-2000

ELISA 1:5000-20000

Basic Information

Clonality Polyclonal

Immunogen Information

Immunogen Synthesized peptide derived from human protein . at AA range: 71-120

Specificity CALCA Polyclonal Antibody detects endogenous levels of protein.

Target Information

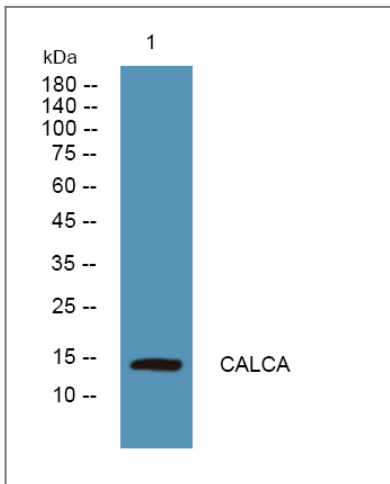
Gene name CALCA CALC1

Protein Name Calcitonin gene-related peptide 1 (Alpha-type CGRP) (Calcitonin gene-related peptide I) (CGRP-I)

Organism	Gene ID	UniProt ID
Human	796;	P06881;
Mouse		Q99JA0;
Rat		P01256;

Cellular Localization Secreted.

Validation Data



Western blot analysis of lysates from U2OS cells, primary antibody was diluted at 1:1000, 4°C over night

Contact information

Orders: order.cn@immunoway.com
Support: support.cn@immunoway.com
Telephone: 400-8787-807(China)
Website: <http://www.immunoway.com.cn>
Address: 2200 Ringwood Ave San Jose, CA 95131 USA



Please scan the QR code to access additional product information:
CALCA Rabbit pAb

For Research Use Only. Not for Use in Diagnostic Procedures.

[Antibody](#) | [ELISA Kits](#) | [Protein](#) | [Reagents](#)