

GNRR2 Rabbit pAb

CatalogNo: YN2546

Key Features

Host Species

- Rabbit

Reactivity

- Human

Applications

- WB,ELISA

MW

- 32kD (Observed)

Isotype

- IgG

Recommended Dilution Ratios

WB 1:500-2000

ELISA 1:5000-20000

Storage

Storage*

-15°C to -25°C/1 year(Do not lower than -25°C)

Formulation

Liquid in PBS containing 50% glycerol, and 0.02% sodium azide.

Basic Information

Clonality

Polyclonal

Immunogen Information

Immunogen

Synthesized peptide derived from human protein . at AA range: 10-90

Specificity

GNRR2 Polyclonal Antibody detects endogenous levels of protein.

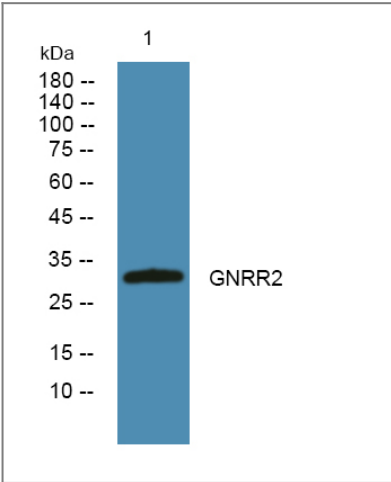
Target Information

Gene name

GNRHR2

Protein Name	Putative gonadotropin-releasing hormone II receptor (GnRH II receptor) (GnRH-II-R) (Type II GnRH receptor)		
	Organism	Gene ID	UniProt ID
	Human		Q96P88 ;
Cellular Localization	Cell membrane; Multi-pass membrane protein.		
Tissue specificity	Expressed in many tissues.		
Function	Caution:Could be the product of a pseudogene. This protein seems to be substantially shorter than orthologous proteins in related organisms.,Function:Receptor for gonadotropin releasing hormone II (GnRH II). This receptor mediates its action by association with G proteins that activate a phosphatidylinositol-calcium second messenger system .,PTM:Phosphorylated on the C-terminal cytoplasmic tail.,sequence Caution:Translated as stop.,similarity:Belongs to the G-protein coupled receptor 1 family.,tissue specificity:Expressed in many tissues.,		

Validation Data



Western blot analysis of lysates from K562 cells, primary antibody was diluted at 1:1000, 4°over night

Contact information

Orders: order.cn@immunoway.com
Support: support.cn@immunoway.com
Telephone: 400-8787-807(China)
Website: http://www.immunoway.com.cn
Address: 2200 Ringwood Ave San Jose, CA 95131 USA



Please scan the QR code to access additional product information:
GNRR2 Rabbit pAb

