

## OR1G1 Rabbit pAb

CatalogNo: YN2595

### | Key Features

#### Host Species

- Rabbit

#### Reactivity

- Human

#### Applications

- WB,ELISA

#### MW

- 34kD (Observed)

#### Isotype

- IgG

### | Recommended Dilution Ratios

**WB 1:500-2000**

**ELISA 1:5000-20000**

### | Storage

#### Storage\*

-15°C to -25°C/1 year(Do not lower than -25°C)

#### Formulation

Liquid in PBS containing 50% glycerol, and 0.02% sodium azide.

### | Basic Information

#### Clonality

Polyclonal

### | Immunogen Information

#### Immunogen

Synthesized peptide derived from part region of human protein

#### Specificity

OR1G1 Polyclonal Antibody detects endogenous levels of protein.

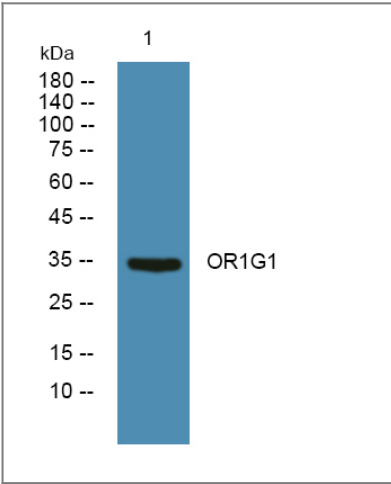
### | Target Information

#### Gene name

OR1G1 OR1G2

<b>Protein Name</b>	Olfactory receptor 1G1 (Olfactory receptor 17-209) (OR17-209) (Olfactory receptor 1G2) (Olfactory receptor OR17-8)		
	<b>Organism</b>	<b>Gene ID</b>	<b>UniProt ID</b>
	Human	<a href="#">8390</a> ;	<a href="#">P47890</a> ;
<b>Cellular Localization</b>	Cell membrane; Multi-pass membrane protein.		
<b>Function</b>	Function:Odorant receptor .,similarity:Belongs to the G-protein coupled receptor 1 family.,		

| Validation Data



Western blot analysis of lysates from SW480 cells, primary antibody was diluted at 1:1000, 4°over night

| Contact information

Orders: order.cn@immunoway.com  
Support: support.cn@immunoway.com  
Telephone: 400-8787-807(China)  
Website: http://www.immunoway.com.cn  
Address: 2200 Ringwood Ave San Jose, CA 95131 USA



Please scan the QR code to access additional product information:  
**OR1G1 Rabbit pAb**