

## HLAE Rabbit pAb

CatalogNo: YN2961

### Key Features

#### Host Species

- Rabbit

#### Reactivity

- Human

#### Applications

- WB, ELISA

#### MW

- 39kD (Observed)

#### Isotype

- IgG

### Recommended Dilution Ratios

**WB 1:500-2000**

**ELISA 1:5000-20000**

### Storage

#### Storage\*

-15°C to -25°C/1 year(Do not lower than -25°C)

#### Formulation

Liquid in PBS containing 50% glycerol, 0.5% BSA and 0.02% sodium azide.

### Basic Information

#### Clonality

Polyclonal

### Immunogen Information

#### Immunogen

Synthesized peptide derived from part region of human protein

#### Specificity

HLAE Polyclonal Antibody detects endogenous levels of protein.

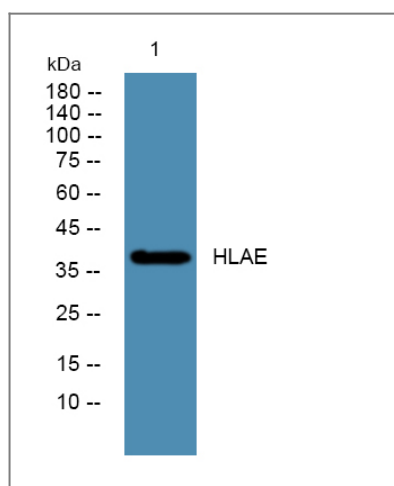
### Target Information

#### Gene name

HLA-E HLA-6.2 HLAE

<b>Protein Name</b>	HLA class I histocompatibility antigen, alpha chain E (MHC class I antigen E)		
	<b>Organism</b>	<b>Gene ID</b>	<b>UniProt ID</b>
	Human	<a href="#">3133</a> ;	<a href="#">P13747</a> ;
<b>Cellular Localization</b>	Cell membrane ; Single-pass type I membrane protein. Golgi apparatus membrane .; [Soluble HLA class I histocompatibility antigen, alpha chain E]: Secreted .		
<b>Tissue specificity</b>	Expressed in secretory endometrial cells during pregnancy (at protein level). The expression in nonlymphoid tissues is restricted to endothelial cells from all types of vessels, including arteries, veins, capillaries, and lymphatics (at protein level). In lymphoid organs, it is mainly expressed in endothelial venules, B and T cells, monocytes, macrophages, NK cells and megakaryocytes (at protein level).		
<b>Function</b>	Caution:The existence of allele E*0102 (PubMed:3260916) and allele E*0104 (PubMed:1977695) is uncertain. The alleles could not be confirmed in further studies (PubMed:12445303).,Function:Preferably binds to a peptide derived from the signal sequence of most HLA-A, -B, -C and -G molecules.,polymorphism:The following alleles of E-1 are known: E*0101, E*0102, E*0103 and E*0104. The sequence shown is that of E*0101.,similarity:Belongs to the MHC class I family.,similarity:Contains 1 Ig-like C1-type (immunoglobulin-like) domain.,subunit:Heterodimer of an alpha chain and a beta chain (beta-2-microglobulin).,		

## Validation Data



Western blot analysis of lysates from DU145 cells, primary antibody was diluted at 1:1000, 4° over night

## Contact information

Orders: [order.cn@immunoway.com](mailto:order.cn@immunoway.com)  
 Support: [support.cn@immunoway.com](mailto:support.cn@immunoway.com)  
 Telephone: 400-8787-807(China)  
 Website: <http://www.immunoway.com.cn>  
 Address: 2200 Ringwood Ave San Jose, CA 95131 USA



Please scan the QR code to access additional product information:  
**HLAE Rabbit pAb**

