

KI3X1 Rabbit pAb

CatalogNo: YN3062

Key Features

Host Species

- Rabbit

Reactivity

- Human

Applications

- WB

MW

- 38kD (Observed)

Isotype

- IgG

Recommended Dilution Ratios

WB 1:500-2000

Storage

Storage*

-15°C to -25°C/1 year(Do not lower than -25°C)

Formulation

Liquid in PBS containing 50% glycerol, 0.5% BSA and 0.02% sodium azide.

Basic Information

Clonality

Polyclonal

Immunogen Information

Immunogen

Synthesized peptide derived from human KI3X1 AA range: 100-150

Specificity

This antibody detects endogenous levels of KI3X1 at Human

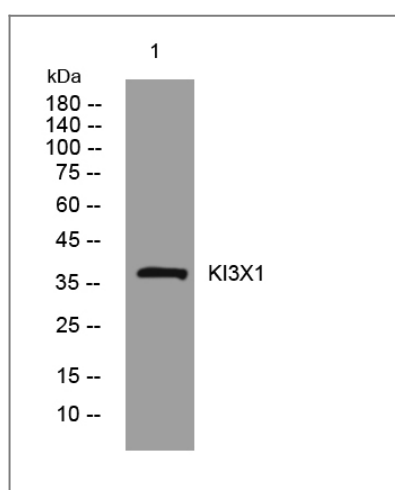
Target Information

Gene name

KIR3DX1 KIR3DL0 LENG12

Protein Name	KI3X1		
	Organism	Gene ID	UniProt ID
	Human		Q9H7L2;
Cellular Localization	Secreted .		
Tissue specificity	Expressed in NK-cells.		

Validation Data



Western blot analysis of lysates from SH-SY5Y cells, primary antibody was diluted at 1:1000, 4° over night

Contact information

Orders: order.cn@immunoway.com
 Support: support.cn@immunoway.com
 Telephone: 400-8787-807(China)
 Website: <http://www.immunoway.com.cn>
 Address: 2200 Ringwood Ave San Jose, CA 95131 USA



Please scan the QR code to access additional product information:
KI3X1 Rabbit pAb

For Research Use Only. Not for Use in Diagnostic Procedures.

[Antibody](#) | [ELISA Kits](#) | [Protein](#) | [Reagents](#)