

MUC21 Rabbit pAb

CatalogNo: YN3177

| Key Features

Host Species

- Rabbit

Reactivity

- Human

Applications

- WB

MW

- 60kD (Observed)

Isotype

- IgG

| Recommended Dilution Ratios

WB 1:500-2000

| Storage

Storage* -15°C to -25°C/1 year(Do not lower than -25°C)

Formulation Liquid in PBS containing 50% glycerol, 0.5% BSA and 0.02% sodium azide.

| Basic Information

Clonality Polyclonal

| Immunogen Information

Immunogen Synthesized peptide derived from human MUC21 AA range: 34-84

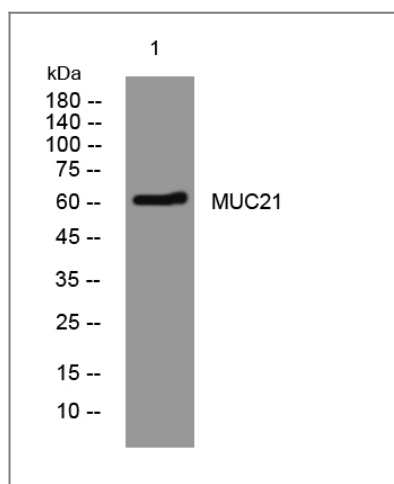
Specificity This antibody detects endogenous levels of MUC21 at Human

| Target Information

Gene name MUC21 C6orf205 UNQ697/PRO1342

Protein Name	MUC21		
	Organism	Gene ID	UniProt ID
	Human	394263 ;	Q5SSG8 ;
Cellular Localization	Cell membrane ; Single-pass type I membrane protein ; Extracellular side .		
Tissue specificity	Expressed in lung, large intestine, thymus, and testis. Expressed in normal and malignant bronchial epithelial cells.		
Function	miscellaneous:Could be considered as a marker for lung carcinomas.,PTM:O-glycosylated.,tissue specificity:Expressed in lung, large intestine, thymus, and testis. Expressed in normal and malignant bronchial epithelial cells.,		

Validation Data



Western blot analysis of lysates from Jurkat cells, primary antibody was diluted at 1:1000, 4° over night

Contact information

Orders: order.cn@immunoway.com
 Support: support.cn@immunoway.com
 Telephone: 400-8787-807(China)
 Website: <http://www.immunoway.com.cn>
 Address: 2200 Ringwood Ave San Jose, CA 95131 USA



Please scan the QR code to access additional product information:
MUC21 Rabbit pAb