

DACT2 Rabbit pAb

CatalogNo: YN3397

Key Features

Host Species

- Rabbit

Reactivity

- Human, Mouse

Applications

- WB

MW

- 85kD (Observed)

Isotype

- IgG

Recommended Dilution Ratios

WB 1:500-2000

Storage

Storage* -15°C to -25°C/1 year (Do not lower than -25°C)

Formulation Liquid in PBS containing 50% glycerol, 0.5% BSA and 0.02% sodium azide.

Basic Information

Clonality Polyclonal

Immunogen Information

Immunogen Synthesized peptide derived from human DACT2 AA range: 239-289

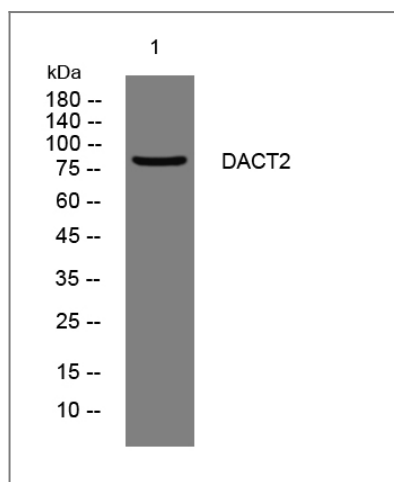
Specificity This antibody detects endogenous levels of DACT2 at Human/Mouse

Target Information

Gene name DACT2 C6orf116 PP13671

Protein Name	DACT2		
	Organism	Gene ID	UniProt ID
	Human	168002;	Q5SW24;
	Mouse	240025;	Q7TN08;
Cellular Localization	cytoplasm,mitochondrion,		
Tissue specificity	Placenta,		
Function	Domain:The C-terminal PDZ-binding motif may mediate interaction with the PDZ domains of DSH (Dishevelled) family proteins.,Function:Negatively regulates the Nodal signaling pathway, possibly by promoting the lysosomal degradation of Nodal receptors.,similarity:Belongs to the dapper family.,		

Validation Data



Western blot analysis of lysates from HCT116 cells, primary antibody was diluted at 1:1000, 4°over night

Contact information

Orders: order.cn@immunoway.com
 Support: support.cn@immunoway.com
 Telephone: 400-8787-807(China)
 Website: <http://www.immunoway.com.cn>
 Address: 2200 Ringwood Ave San Jose, CA 95131 USA



Please scan the QR code to access additional product information:
DACT2 Rabbit pAb