

## DOCK4 Rabbit pAb

CatalogNo: YN3565

### Key Features

#### Host Species

- Rabbit

#### Reactivity

- Human, Mouse

#### Applications

- WB

#### MW

- 216kD (Calculated)

#### Isotype

- IgG

### Recommended Dilution Ratios

WB 1:500-2000

### Storage

**Storage\*** -15°C to -25°C/1 year (Do not lower than -25°C)

**Formulation** Liquid in PBS containing 50% glycerol, 0.5% BSA and 0.02% sodium azide.

### Basic Information

**Clonality** Polyclonal

### Immunogen Information

**Immunogen** Synthesized peptide derived from human DOCK4 AA range: 533-583

**Specificity** This antibody detects endogenous levels of DOCK4 at Human/Mouse

### Target Information

**Gene name** DOCK4 KIAA0716

**Protein Name** DOCK4

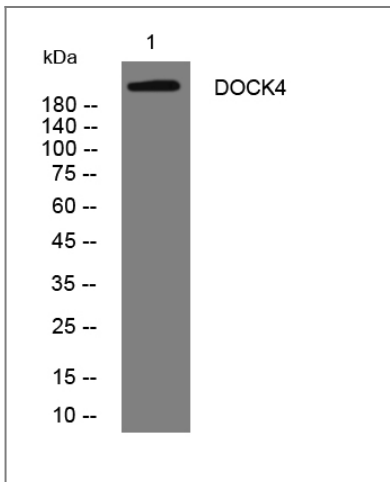
Organism	Gene ID	UniProt ID
Human	<a href="#">9732</a> ;	<a href="#">Q8N110</a> ;
Mouse	<a href="#">238130</a> ;	<a href="#">P59764</a> ;

**Cellular Localization** Cell membrane . Cell projection . Cytoplasm, cytosol . Colocalizes with EPHA2, RHOG and CTTN/cortactin at the tip of protrusions in migrating cells. .

**Tissue specificity** Widely expressed at low level. Highly expressed in skeletal muscle, prostate and ovary. ; [Isoform 2]: May be specifically expressed in the brain and eye.

**Function** Disease:Defects in DOCK4 are involved in the cause of some cancers, which are probably due to lack of Rap1 activation.,Domain:The DHR-2 domain probably mediates the GEF activity.,Function:Involved in regulation of adherens junction between cells. Functions as a guanine nucleotide exchange factor (GEF), which activates Rap1 small GTPase by exchanging bound GDP for free GTP.,miscellaneous:Injection of wild-type protein suppresses tumor invasion in osteosarcoma mouse cell lines while it is not the case with the Leu-1718 variant.,similarity:Belongs to the DOCK family.,similarity:Contains 1 DHR-1 (CZH-1) domain.,similarity:Contains 1 DHR-2 (CZH-2) domain.,similarity:Contains 1 SH3 domain.,subunit:Interacts with the SH3 domain of CRK. Interacts with nucleotide-free Rap1.,tissue specificity:Widely expressed at low level. Highly expressed in skeletal muscle, prostate and ovary.,

## Validation Data



Western blot analysis of lysates from Jurkat cells, primary antibody was diluted at 1:1000, 4° over night

## Contact information

Orders: order.cn@immunoway.com  
Support: support.cn@immunoway.com  
Telephone: 400-8787-807(China)  
Website: <http://www.immunoway.com.cn>  
Address: 2200 Ringwood Ave San Jose, CA 95131 USA



Please scan the QR code  
to access additional  
product information:  
**DOCK4 Rabbit pAb**

---

For Research Use Only. Not for Use in Diagnostic Procedures.

[Antibody](#) | [ELISA Kits](#) | [Protein](#) | [Reagents](#)