

S35G6 Rabbit pAb

CatalogNo: YN3664

| Key Features

Host Species

- Rabbit

Reactivity

- Human

Applications

- WB

MW

- 37kD (Calculated)

Isotype

- IgG

| Recommended Dilution Ratios

WB 1:500-2000

| Storage

Storage* -15°C to -25°C/1 year(Do not lower than -25°C)

Formulation Liquid in PBS containing 50% glycerol, 0.5% BSA and 0.02% sodium azide.

| Basic Information

Clonality Polyclonal

| Immunogen Information

Immunogen Synthesized peptide derived from human S35G6 AA range: 286-336

Specificity This antibody detects endogenous levels of S35G6 at Human

| Target Information

Gene name SLC35G6 AMAC1L3 TMEM21B

Protein Name S35G6

Organism

Human

Gene ID

[643664;](#)

UniProt ID

[P0C7Q6;](#)

**Cellular
Localization**

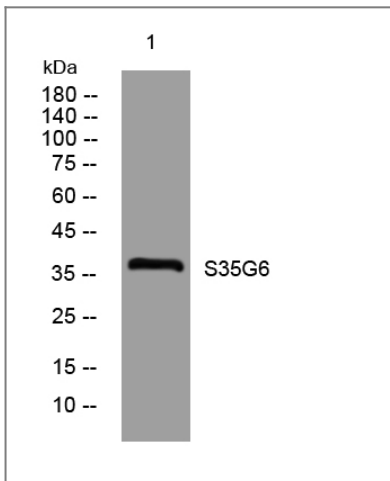
Membrane ; Multi-pass membrane protein .

Tissue specificity Expressed in placenta and testis.

Function

miscellaneous:The gene encoding this protein appears to have arisen by SVA-mediated retrotransposition of the AMAC1L3 gene in the primate lineage.,miscellaneous:This gene appears to be the source locus of an SVA-mediated retrotransposition event that gave rise to AMAC1, AMAC1L1 and AMAC1L2 genes.,similarity:Contains 2 DUF6 domains.,tissue specificity:Expressed in placenta and testis.,tissue specificity:Expressed in testis.,

Validation Data



Western blot analysis of lysates from MCF-7 cells, primary antibody was diluted at 1:1000, 4°over night

Contact information

Orders: order.cn@immunoway.com
Support: support.cn@immunoway.com
Telephone: 400-8787-807(China)
Website: <http://www.immunoway.com.cn>
Address: 2200 Ringwood Ave San Jose, CA 95131 USA



Please scan the QR code to access additional product information:
S35G6 Rabbit pAb