

C2G1P Rabbit pAb

CatalogNo: YN3921

| Key Features

Host Species

- Rabbit

Reactivity

- Human

Applications

- WB

MW

- 16kD (Calculated)

Isotype

- IgG

| Recommended Dilution Ratios

WB 1:500-2000

| Storage

Storage* -15°C to -25°C/1 year(Do not lower than -25°C)

Formulation Liquid in PBS containing 50% glycerol, 0.5% BSA and 0.02% sodium azide.

| Basic Information

Clonality Polyclonal

| Immunogen Information

Immunogen Synthesized peptide derived from human C2G1P AA range: 13-63

Specificity This antibody detects endogenous levels of C2G1P at Human

| Target Information

Gene name CYP2G1P CYP2GP1

Protein Name C2G1P

Organism

Gene ID

UniProt ID

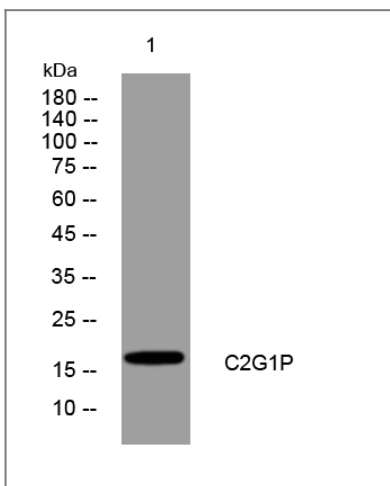
Human

[Q6ZSU1](#);

Function

Caution: Could be the product of a pseudogene. In contrast to other members of the family, it is shorter at the N-terminus., cofactor: Heme group., similarity: Belongs to the cytochrome P450 family.,

Validation Data



Western blot analysis of lysates from 293T cells, primary antibody was diluted at 1:1000, 4° over night

Contact information

Orders: order.cn@immunoway.com
Support: support.cn@immunoway.com
Telephone: 400-8787-807(China)
Website: <http://www.immunoway.com.cn>
Address: 2200 Ringwood Ave San Jose, CA 95131 USA



Please scan the QR code to access additional product information:
C2G1P Rabbit pAb

For Research Use Only. Not for Use in Diagnostic Procedures.

[Antibody](#) | [ELISA Kits](#) | [Protein](#) | [Reagents](#)