

## EYS Rabbit pAb

CatalogNo: YN4081

### Key Features

**Host Species**

- Rabbit

**Reactivity**

- Human

**Applications**

- IHC,IF

**MW**

- 348kD (Calculated)

**Isotype**

- IgG

### Recommended Dilution Ratios

IHC 1:50-200

IF 1:50-200

### Storage

**Storage\***

-15°C to -25°C/1 year(Do not lower than -25°C)

**Formulation**

Liquid in PBS containing 50% glycerol, 0.5% BSA and 0.02% sodium azide.

### Basic Information

**Clonality**

Polyclonal

### Immunogen Information

**Immunogen**

Synthesized peptide derived from human EYS AA range: 2780-2830

**Specificity**

This antibody detects endogenous levels of EYS at Human

### Target Information

**Gene name**

EYS C6orf178 C6orf179 C6orf180 EGFL10 EGFL11 SPAM UNQ9424/PRO34591

**Protein Name** EYS

**Organism**

**Gene ID**

**UniProt ID**

Human

[346007](#);

[Q5T1H1](#);

**Cellular  
Localization**

Cell projection, cilium, photoreceptor outer segment . Cell projection, cilium . Cytoplasm, cytoskeleton, cilium axoneme . Cytoplasm, cytoskeleton, microtubule organizing center, centrosome . Secreted, extracellular space, extracellular matrix, interphotoreceptor matrix . Localizes to discrete puncta at, or adjacent to, the photoreceptor connecting cilium (PubMed:27737822). Highly expressed in cone photoreceptor outer segments (PubMed:27737822). Weakly expressed in rod photoreceptor outer segments (By similarity). May localize to the cilium axoneme (PubMed:27846257). May also be secreted into the interphotoreceptor extracellular matrix (PubMed:27737822). .

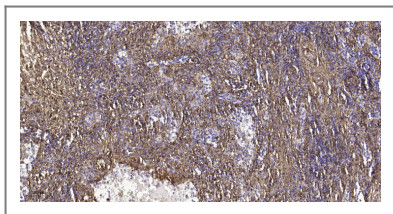
**Tissue specificity**

Expressed in retina (at protein level) (PubMed:18976725, PubMed:18836446, PubMed:27737822, PubMed:27846257). Isoform 1: Detected in retina (PubMed:27846257). Isoform 2: Detected in retina (PubMed:27846257). Isoform 3: Strongly expressed in retina and testis (PubMed:27846257). Isoform 4: Strongly expressed in testis, and weakly expressed in retina (PubMed:27846257).

**Function**

Disease:Defects in EGFL10 are the cause of retinitis pigmentosa type 25 (RP25) [MIM:602772]. RP leads to degeneration of retinal photoreceptor cells. Patients suffer of night blindness, beginning at approximately 25 years of age, and deterioration of visual acuity (central vision), beginning at approximately 30 years of age. By age 55 to 60 years, many affected subjects had no perception of light in either eye.,Function:Required to maintain the integrity of photoreceptor cells.,miscellaneous:Although the protein is conserved in Drosophila, the gene encoding the orthologous protein is inactive in rodents.,similarity:Belongs to the EYS family.,similarity:Contains 27 EGF-like domains.,similarity:Contains 5 laminin G-like domains.,subcellular location:Localizes in the photoreceptor cells layer.,tissue specificity:Present in retina.,

## Validation Data



Immunohistochemical analysis of paraffin-embedded human spleen tissue. 1,primary Antibody was diluted at 1:200(4° overnight). 2, Sodium citrate pH 6.0 was used for antigen retrieval(>98°C,20min). 3,Secondary antibody was diluted at 1:200

## Contact information

Orders: [order.cn@immunoway.com](mailto:order.cn@immunoway.com)  
Support: [support.cn@immunoway.com](mailto:support.cn@immunoway.com)  
Telephone: 400-8787-807(China)  
Website: <http://www.immunoway.com.cn>  
Address: 2200 Ringwood Ave San Jose, CA 95131 USA



Please scan the QR code to access additional product information:  
**EYS Rabbit pAb**

