

## GMCLL Rabbit pAb

CatalogNo: YN4083

### Key Features

#### Host Species

- Rabbit

#### Reactivity

- Human, Mouse

#### Applications

- WB

#### MW

- 58kD (Calculated)

#### Isotype

- IgG

### Recommended Dilution Ratios

WB 1:500-2000

### Storage

**Storage\*** -15°C to -25°C/1 year (Do not lower than -25°C)

**Formulation** Liquid in PBS containing 50% glycerol, 0.5% BSA and 0.02% sodium azide.

### Basic Information

**Clonality** Polyclonal

### Immunogen Information

**Immunogen** Synthesized peptide derived from human GMCLL AA range: 20-70

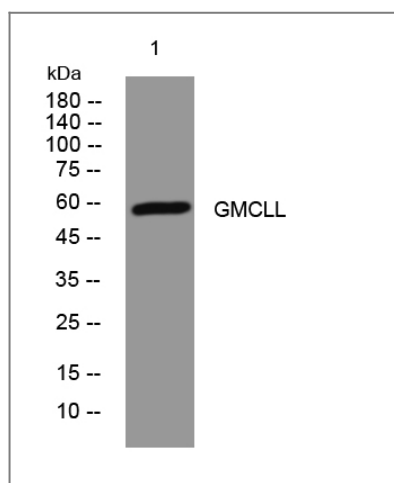
**Specificity** This antibody detects endogenous levels of GMCLL at Human/Mouse

### Target Information

**Gene name** GMCL1P1 GCL GMCL1L

<b>Protein Name</b>	GMCLL		
	<b>Organism</b>	<b>Gene ID</b>	<b>UniProt ID</b>
	Human		<a href="#">Q8NEA9</a> ;
	Mouse	<a href="#">100040533</a> ;	<a href="#">Q99N64</a> ;
<b>Cellular Localization</b>	Nucleus matrix .		
<b>Tissue specificity</b>	Expressed predominantly in testis.		
<b>Function</b>	<p>Function:Possible function in spermatogenesis. Enhances the degradation of MDM2 and increases the amount of p53 probably by modulating the nucleocytoplasmic transport (By similarity). Probable substrate-specific adapter of an E3 ubiquitin-protein ligase complex which mediates the ubiquitination and subsequent proteasomal degradation of target proteins.,Function:Possible function in spermatogenesis. Enhances the degradation of MDM2 and increases the amount of p53 probably by modulating the nucleocytoplasmic transport.,pathway:Protein modification; protein ubiquitination.,similarity:Contains 1 BTB (POZ) domain.,subunit:Interacts with TMPO-beta, TSG101 and TFDP2 (By similarity). Interacts with EMD.,subunit:Interacts with TMPO-Beta, TSG101 and TFDP2. Interacts with EMD (By similarity). Interacts with CUL3.,</p>		

## Validation Data



Western blot analysis of lysates from DU145 cells, primary antibody was diluted at 1:1000, 4° over night

## Contact information

Orders: [order.cn@immunoway.com](mailto:order.cn@immunoway.com)  
 Support: [support.cn@immunoway.com](mailto:support.cn@immunoway.com)  
 Telephone: 400-8787-807(China)  
 Website: <http://www.immunoway.com.cn>  
 Address: 2200 Ringwood Ave San Jose, CA 95131 USA



Please scan the QR code to access additional product information:  
**GMCLL Rabbit pAb**

