

CR015 Rabbit pAb

CatalogNo: YN4328

| Key Features

Host Species

- Rabbit

Reactivity

- Human

Applications

- WB

MW

- 20kD (Calculated)

Isotype

- IgG

| Recommended Dilution Ratios

WB 1:500-2000

| Storage

Storage* -15°C to -25°C/1 year(Do not lower than -25°C)

Formulation Liquid in PBS containing 50% glycerol, 0.5% BSA and 0.02% sodium azide.

| Basic Information

Clonality Polyclonal

| Immunogen Information

Immunogen Synthesized peptide derived from human CR015 AA range: 39-89

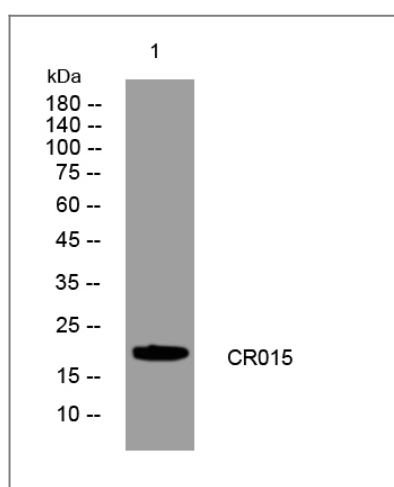
Specificity This antibody detects endogenous levels of CR015 at Human

| Target Information

Gene name C18orf15

Protein Name	CR015		
	Organism	Gene ID	UniProt ID
	Human		Q96N68 ;
Cellular Localization	Membrane ; Single-pass membrane protein .		
Function	Caution:Product of a dubious CDS prediction.,		

Validation Data



Western blot analysis of lysates from VEC cells, primary antibody was diluted at 1:1000, 4°over night

Contact information

Orders: order.cn@immunoway.com
 Support: support.cn@immunoway.com
 Telephone: 400-8787-807(China)
 Website: <http://www.immunoway.com.cn>
 Address: 2200 Ringwood Ave San Jose, CA 95131 USA



Please scan the QR code to access additional product information:
CR015 Rabbit pAb

For Research Use Only. Not for Use in Diagnostic Procedures.

[Antibody](#) | [ELISA Kits](#) | [Protein](#) | [Reagents](#)