

## WDR82 Rabbit pAb

CatalogNo: YN4331

### Key Features

#### Host Species

- Rabbit

#### Reactivity

- Human, Mouse

#### Applications

- WB

#### MW

- 34kD (Calculated)

#### Isotype

- IgG

### Recommended Dilution Ratios

WB 1:500-2000

### Storage

**Storage\*** -15°C to -25°C/1 year (Do not lower than -25°C)

**Formulation** Liquid in PBS containing 50% glycerol, 0.5% BSA and 0.02% sodium azide.

### Basic Information

**Clonality** Polyclonal

### Immunogen Information

**Immunogen** Synthesized peptide derived from human WDR82 AA range: 219-269

**Specificity** This antibody detects endogenous levels of WDR82 at Human/Mouse

### Target Information

**Gene name** WDR82 WDR82A UNQ9342/PRO34047

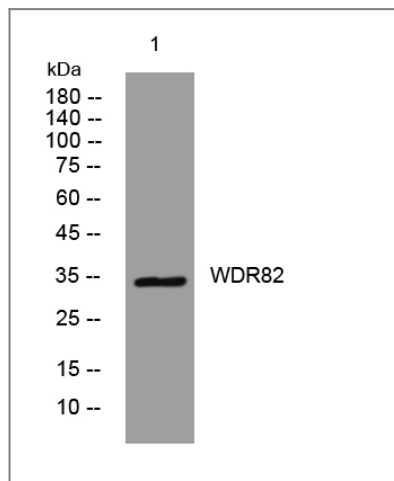
**Protein Name** WDR82

| Organism | Gene ID                | UniProt ID              |
|----------|------------------------|-------------------------|
| Human    | <a href="#">80335;</a> | <a href="#">Q6UXN9;</a> |
| Mouse    | <a href="#">77305;</a> | <a href="#">Q8BFQ4;</a> |

**Cellular Localization** Nucleus . Chromosome . Associates with chromatin (PubMed:20516061). Recruited at sites of high RNA polymerase II occupancy (By similarity). .

**Function** Caution:The gene encoding this protein shares one overlapping exon with TMEM113.,Function:Component of the Set1/Ash2 histone methyltransferase (HMT) complex, a complex that specifically methylates 'Lys-4' of histone H3.,similarity:Belongs to the WD repeat SWD2 family.,similarity:Contains 6 WD repeats.,subunit:Interacts with CUL4B. Component of the SET1 complex, at least composed of the catalytic subunit (SETD1A or SETD1B), WDR5, WDR82, RBBP5, ASH2/ASH2L and CXXC1/CFP1.,

## Validation Data



Western blot analysis of lysates from Jurkat cells, primary antibody was diluted at 1:1000, 4°over night

## Contact information

Orders: order.cn@immunoway.com  
Support: support.cn@immunoway.com  
Telephone: 400-8787-807(China)  
Website: <http://www.immunoway.com.cn>  
Address: 2200 Ringwood Ave San Jose, CA 95131 USA



Please scan the QR code to access additional product information:  
**WDR82 Rabbit pAb**