

A Cyclase I Rabbit pAb

CatalogNo: YT0029

Key Features

Host Species

- Rabbit

Reactivity

- Human, Mouse

Applications

- WB, IHC, IF, ELISA

MW

- 130kD (Observed)

Isotype

- IgG

Recommended Dilution Ratios

WB 1:500-1:2000

IHC 1:100-1:300

ELISA 1:40000

IF 1:50-200

Storage

Storage*

-15°C to -25°C/1 year (Do not lower than -25°C)

Formulation

Liquid in PBS containing 50% glycerol, 0.5% BSA and 0.02% sodium azide.

Basic Information

Clonality

Polyclonal

Immunogen Information

Immunogen

The antiserum was produced against synthesized peptide derived from human ADCY1. AA range: 231-280

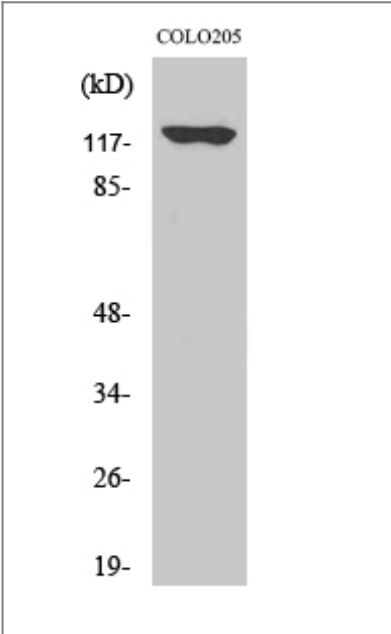
Specificity

A Cyclase I Polyclonal Antibody detects endogenous levels of A Cyclase I protein.

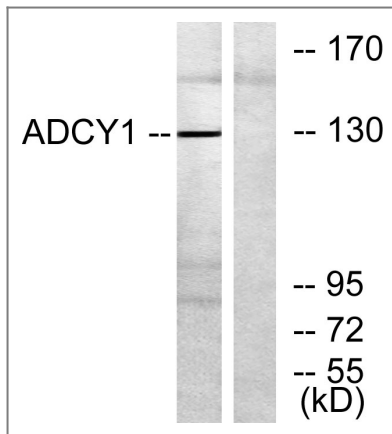
Target Information

Gene name	ADCY1		
Protein Name	Adenylate cyclase type 1		
	Organism	Gene ID	UniProt ID
	Human	107 ;	Q08828 ;
	Mouse	432530 ;	O88444 ;
Cellular Localization	Membrane ; Multi-pass membrane protein . Cell membrane ; Multi-pass membrane protein . Cytoplasm . Membrane raft . Expressed in the cytoplasm of supporting cells and hair cells of the cochlea vestibule, as well as to the cochlear hair cell nuclei and stereocilia. .		
Tissue specificity	Detected in zona glomerulosa and zona fasciculata in the adrenal gland (at protein level) (PubMed:11549699). Brain, retina and adrenal medulla.		
Function	Catalytic activity:ATP = 3',5'-cyclic AMP + diphosphate.,cofactor:Binds 2 magnesium ions per subunit.,enzyme regulation:Activated by calcium/calmodulin. Inhibited by the G protein beta and gamma subunit complex.,Function:This is a calmodulin-sensitive adenylyl cyclase. May be involved in regulatory processes in the central nervous system. It may play a role in memory acquisition and learning.,similarity:Belongs to the adenylyl cyclase class-4/guanylyl cyclase family.,similarity:Contains 2 guanylate cyclase domains.,tissue specificity:Brain, retina and adrenal medulla.,		

| Validation Data



Western Blot analysis of COLO205 cells using A Cyclase I Polyclonal Antibody



Western blot analysis of lysates from COLO205 cells, using ADCY1 Antibody. The lane on the right is blocked with the synthesized peptide.

Contact information

Orders: order.cn@immunoway.com
 Support: support.cn@immunoway.com
 Telephone: 400-8787-807(China)
 Website: <http://www.immunoway.com.cn>
 Address: 2200 Ringwood Ave San Jose, CA 95131 USA



Please scan the QR code to access additional product information:
A Cyclase I Rabbit pAb

For Research Use Only. Not for Use in Diagnostic Procedures.

[Antibody](#) | [ELISA Kits](#) | [Protein](#) | [Reagents](#)