

A Cyclase IV Rabbit pAb

CatalogNo: YT0030

| Key Features

Host Species

- Rabbit

Reactivity

- Human, Mouse, Rat

Applications

- WB, ELISA

MW

- 120kD (Observed)

Isotype

- IgG

| Recommended Dilution Ratios

WB 1:500-1:2000

ELISA 1:20000

Not yet tested in other applications.

| Storage

Storage*

-15°C to -25°C/1 year (Do not lower than -25°C)

Formulation

Liquid in PBS containing 50% glycerol, 0.5% BSA and 0.02% sodium azide.

| Basic Information

Clonality

Polyclonal

| Immunogen Information

Immunogen

The antiserum was produced against synthesized peptide derived from human ADCY4. AA range: 195-244

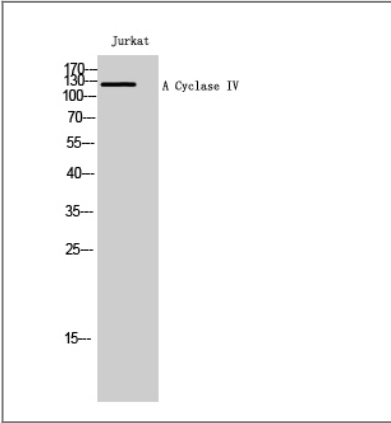
Specificity

A Cyclase IV Polyclonal Antibody detects endogenous levels of A Cyclase IV protein.

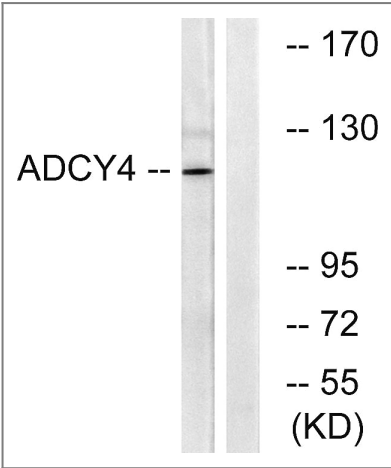
| Target Information

Gene name	ADCY4		
Protein Name	Adenylate cyclase type 4		
	Organism	Gene ID	UniProt ID
	Human	196883 ;	Q8NFM4 ;
	Mouse	104110 ;	Q91WF3 ;
	Rat		P26770 ;
Cellular Localization	Cell membrane ; Multi-pass membrane protein . Cytoplasm .		
Tissue specificity	Detected in the zona glomerulosa and the zona fasciculata in the adrenal gland (at protein level).		
Function	Catalytic activity:ATP = 3',5'-cyclic AMP + diphosphate.,cofactor:Binds 2 magnesium ions per subunit.,enzyme regulation:Insensitive to calcium/calmodulin. Stimulated by the G protein beta and gamma subunit complex.,Function:This is a membrane-bound, calmodulin-insensitive adenylyl cyclase.,similarity:Belongs to the adenylyl cyclase class-4/guanylyl cyclase family.,similarity:Contains 2 guanylate cyclase domains.,		

| Validation Data



Western Blot analysis of Jurkat cells using A Cyclase IV Polyclonal Antibody



Western blot analysis of lysates from Jurkat cells, using ADCY4 Antibody. The lane on the right is blocked with the synthesized peptide.

| Contact information

Orders: order.cn@immunoway.com
Support: support.cn@immunoway.com
Telephone: 400-8787-807(China)
Website: <http://www.immunoway.com.cn>
Address: 2200 Ringwood Ave San Jose, CA 95131 USA



Please scan the QR code
to access additional
product information:
**A Cyclase IV Rabbit
pAb**

For Research Use Only. Not for Use in Diagnostic Procedures.

[Antibody](#) | [ELISA Kits](#) | [Protein](#) | [Reagents](#)