

## Bradykinin B1 R Rabbit pAb

CatalogNo: YT0514

### Key Features

#### Host Species

- Rabbit

#### Reactivity

- Human,Rat,Mouse,

#### Applications

- WB,IF,ELISA

#### MW

- 40kD (Observed)

#### Isotype

- IgG

### Recommended Dilution Ratios

**WB 1:500-1:2000**

**IF 1:200-1:1000**

**ELISA 1:5000**

**Not yet tested in other applications.**

### Storage

**Storage\*** -15°C to -25°C/1 year(Do not lower than -25°C)

**Formulation** Liquid in PBS containing 50% glycerol, 0.5% BSA and 0.02% sodium azide.

### Basic Information

**Clonality** Polyclonal

### Immunogen Information

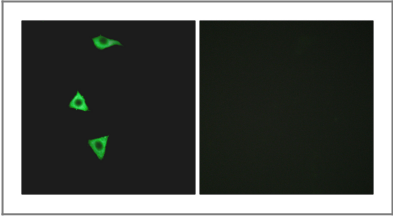
**Immunogen** The antiserum was produced against synthesized peptide derived from human BDKRB1. AA range:201-250

**Specificity** Bradykinin B1 R Polyclonal Antibody detects endogenous levels of Bradykinin B1 R protein.

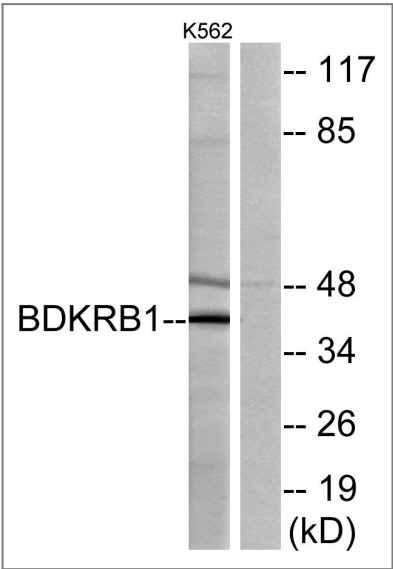
## | Target Information

|                       |  |                      |                         |
|-----------------------|--|----------------------|-------------------------|
| Gene name             | BDKRB1   |                      |                         |
| Protein Name          | B1 bradykinin receptor   |                      |                         |
|                       | Organism   | Gene ID              | UniProt ID              |
|                       | Human  | <a href="#">623;</a> | <a href="#">P46663;</a> |
|                       | Mouse  |                      | <a href="#">Q61125;</a> |
| Cellular Localization | Cell membrane; Multi-pass membrane protein.  |                      |                         |
| Tissue specificity    | Lung,Skin,   |                      |                         |
| Function              | Function:This is a receptor for bradykinin. Could be a factor in chronic pain and inflammation.,online information:Bradykinin receptor entry,similarity:Belongs to the G-protein coupled receptor 1 family., |                      |                         |

## | Validation Data



Immunofluorescence analysis of LOVO cells, using BDKRB1 Antibody. The picture on the right is blocked with the synthesized peptide.



Western blot analysis of lysates from K562 cells, using BDKRB1 Antibody. The lane on the right is blocked with the synthesized peptide.

## | Contact information

Orders: order.cn@immunoway.com  
Support: support.cn@immunoway.com  
Telephone: 400-8787-807(China)  
Website: <http://www.immunoway.com.cn>  
Address: 2200 Ringwood Ave San Jose, CA 95131 USA



Please scan the QR code  
to access additional  
product information:  
**Bradykinin B1 R**  
**Rabbit pAb**

---

For Research Use Only. Not for Use in Diagnostic Procedures.

[Antibody](#) | [ELISA Kits](#) | [Protein](#) | [Reagents](#)