

Fhit Rabbit pAb

CatalogNo: YT1704

Key Features

Host Species

- Rabbit

Reactivity

- Human,Rat,Mouse,

Applications

- WB,IHC,IF,ELISA

MW

- 16kD (Observed)

Isotype

- IgG

Recommended Dilution Ratios

WB 1:500-1:2000

IHC 1:100-1:300

IF 1:200-1:1000

ELISA 1:10000

Not yet tested in other applications.

Storage

Storage* -15°C to -25°C/1 year(Do not lower than -25°C)

Formulation Liquid in PBS containing 50% glycerol, 0.5% BSA and 0.02% sodium azide.

Basic Information

Clonality Polyclonal

Immunogen Information

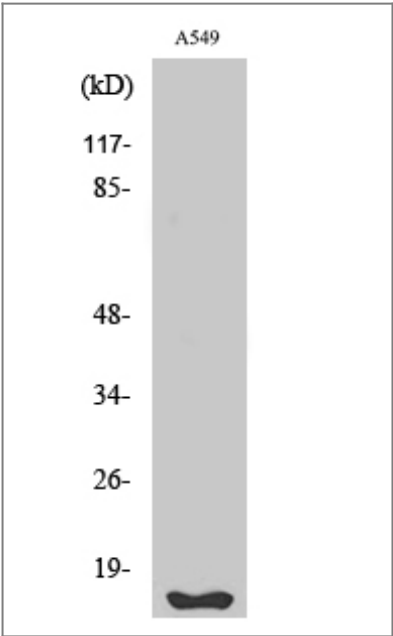
Immunogen The antiserum was produced against synthesized peptide derived from human FHIT. AA range:81-130

Specificity Fhit Polyclonal Antibody detects endogenous levels of Fhit protein.

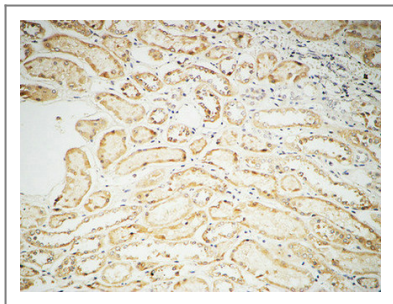
Target Information

Gene name	FHIT		
Protein Name	Bis(5'-adenosyl)-triphosphatase		
	Organism	Gene ID	UniProt ID
	Human	2272 ;	P49789 ;
	Mouse		O89106 ;
Cellular Localization	Cytoplasm . Mitochondrion . Nucleus .		
Tissue specificity	Low levels expressed in all tissues tested. Phospho-FHIT observed in liver and kidney, but not in brain and lung. Phospho-FHIT undetected in all tested human tumor cell lines.		
Function	Catalytic activity:P(1)-P(3)-bis(5'-adenosyl) triphosphate + H(2)O = ADP + AMP.,cofactor:Divalent cations. Magnesium, but manganese and to a lesser extent calcium or cobalt can be substituted; but not zinc, cadmium or nickel.,Disease:A chromosomal aberration involving FHIT is observed in early onset bilateral and multifocal clear cell renal carcinoma [MIM:144700]. Translocation t(3;8) (3p14.2).,Disease:Associated with digestive tract cancers. Numerous tumor types are found to have aberrant forms of FHIT protein due to deletions in a coding region of chromosome 3p14.2 including the fragile site locus FRA3B.,Function:Cleaves A-5'-PPP-5'A to yield AMP and ADP. Possible tumor suppressor for specific tissues.,mass spectrometry: PubMed:15007172,similarity:Contains 1 HIT domain.,subunit:Homodimer.,tissue specificity:Low levels expressed in all tissues tested. Phospho-FHIT observed in liver and kidney, but not in brain and lung. Phospho-FHIT undetected in all tested human tumor cell lines.,		

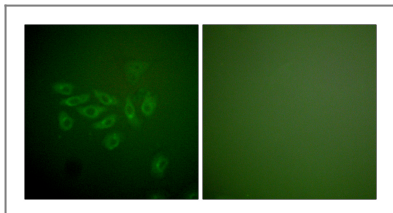
Validation Data



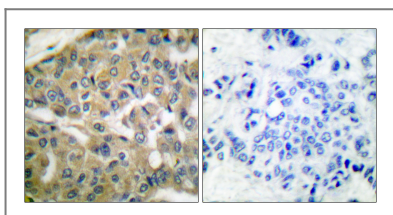
Western Blot analysis of various cells using Fhit Polyclonal Antibody



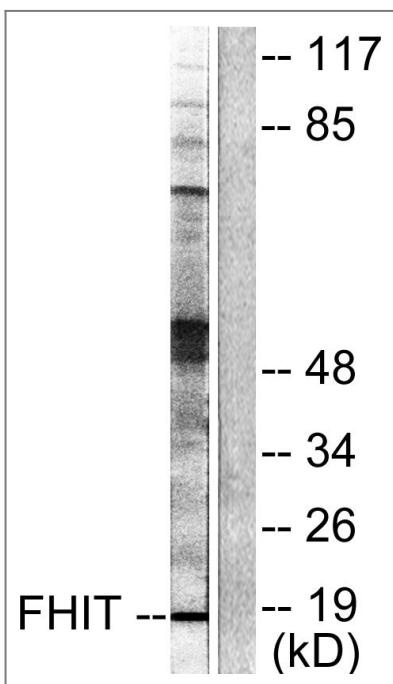
Immunohistochemical analysis of paraffin-embedded Human kidney. 1, Antibody was diluted at 1:100(4° overnight). 2, High-pressure and temperature EDTA, pH8.0 was used for antigen retrieval. 3, Secondary antibody was diluted at 1:200(room temperature, 30min).



Immunofluorescence analysis of A549 cells, using FHIT Antibody. The picture on the right is blocked with the synthesized peptide.



Immunohistochemistry analysis of paraffin-embedded human breast carcinoma tissue, using FHIT Antibody. The picture on the right is blocked with the synthesized peptide.



Western blot analysis of lysates from A549 cells, using FHIT Antibody. The lane on the right is blocked with the synthesized peptide.

Contact information

Orders: order.cn@immunoway.com
 Support: support.cn@immunoway.com
 Telephone: 400-8787-807(China)
 Website: <http://www.immunoway.com.cn>
 Address: 2200 Ringwood Ave San Jose, CA 95131 USA



Please scan the QR code to access additional product information:
Fhit Rabbit pAb

